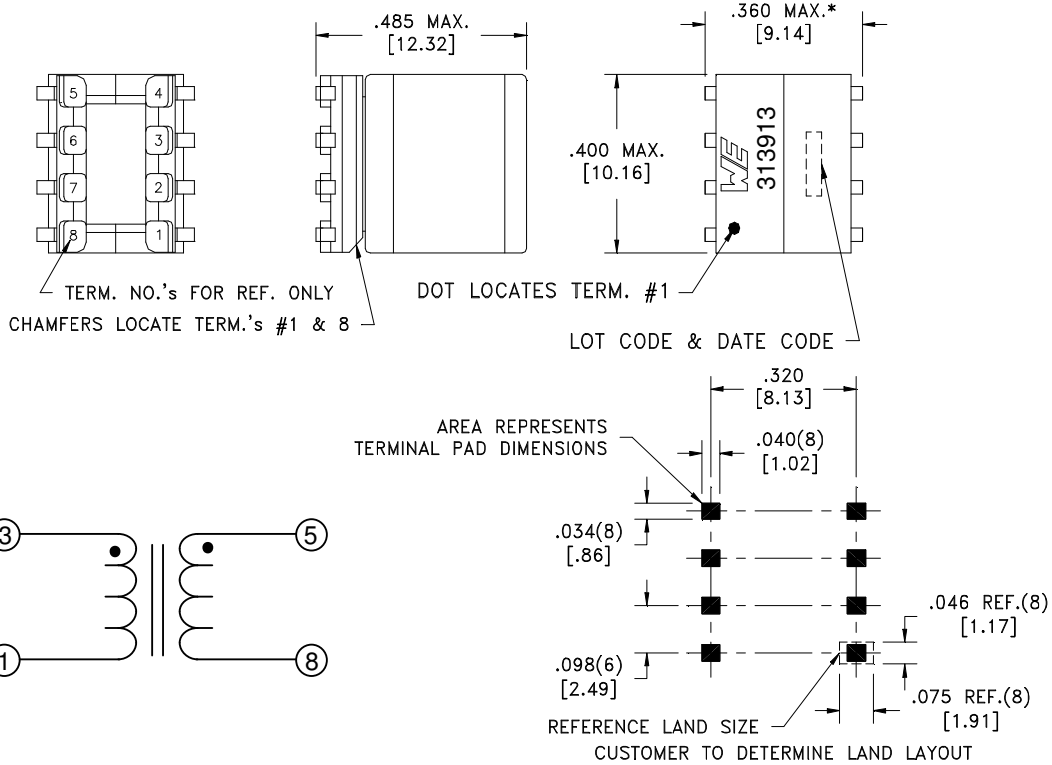


CUSTOMER TERMINAL	RoHS	LEAD(Pb)-FREE
Sn96%, Ag4%	Yes	Yes



* DIMENSION MAY BE EXCEEDED WITH SOLDER ONLY



ELECTRICAL SPECIFICATIONS @ 25°C unless otherwise noted:

D.C. RESISTANCE (@20°C):	1-3 , 6.90 Ohms ±10%. 5-8 , 1.90 Ohms ±10%.
DIELECTRIC RATING:	500VAC, 1 minute tested by applying 625VAC for 1 second between pins 3-5.
INDUCTANCE:	4.00 mH ±20%, 10kHz, 100mVAC, 0mADC, 1-3, Ls.
SATURATION CURRENT:	240mA saturating current that causes 20% rolloff from initial inductance.
TURNS RATIO:	(3-1):(5-8) , (4.228):(1.00) , ±1%.

Safety Standard Undefined

Wire insulation & RoHS status not affected by wire color. Wire insulation color may vary depending on availability.

Würth Electronics Midcom Inc. Watertown, SD USA Toll Free: 800-643-2661 Fax: 605-886-4486	Unless otherwise specified, tolerances are as follows: Angles: ±1° Fractions: ±1/64 Decimals: ±.005(.127mm) Footprint: ±.005(.13mm)	more than you expect	
	Drawing Title <h1>Transformer</h1>	Drawing Number <h1>750313913</h1>	Rev. <h1>00</h1>
This drawing is dual dimensioned. Dimensions in brackets are in millimeters	Revisions: See Sheet 1	Scale ----	Spec Sheet 1 of 1

Engineer:PLP

03/28/2013