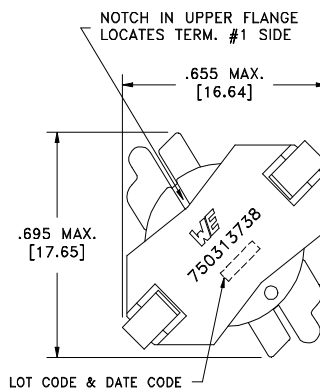
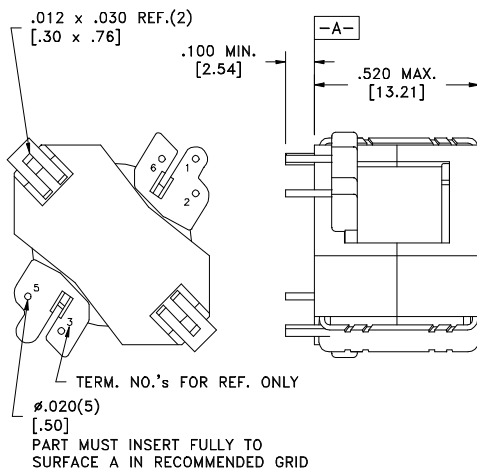
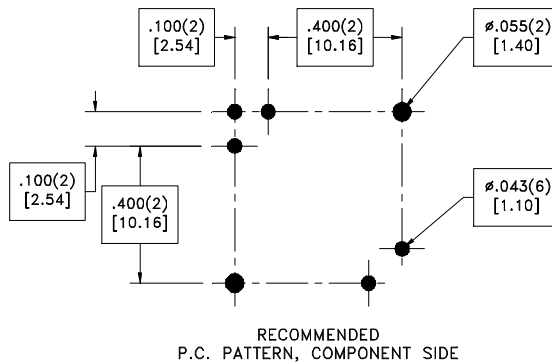
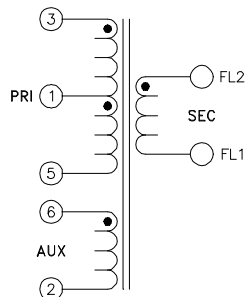


CUSTOMER TERMINAL	RoHS	LEAD(Pb)-FREE
Sn96%, Ag4%	Yes	Yes

Clip terminals may be longer than bobbin terminals.



Flying leads exit the top side of the coil on terminal #1 side, 1.38" ref. FL1 is labeled



#### ELECTRICAL SPECIFICATIONS @ 25°C unless otherwise noted:

D.C. RESISTANCE (@20°C):	5-3 , 1.478 Ohms $\pm 10\%$ . FL1-FL2 , 0.130 Ohms $\pm 10\%$ . 2-6 , 0.686 Ohms $\pm 10\%$ .
DIELECTRIC RATING:	1875VAC for 1 second between pins 3-FL2(tie 5+6). 625VDC for 1 second between pins 3-6.
INDUCTANCE:	1.50mH $\pm 10\%$ , 10kHz, 100mVAC, 0mADC, 3-5, Ls.
LEAKAGE INDUCTANCE:	5.0 $\mu$ H typ., 7.5 $\mu$ H max., 100kHz, 100mVAC, 3-5(tie 2+6, FL1+FL2), Ls.
URNS RATIO:	( 5-3 ):( FL1-FL2 ), ( 5 ):(1.00), $\pm 1\%$ . ( 5-3 ):( 2-6 ), ( 2.5 ):(1.00), $\pm 1\%$ .
SATURATION CURRENT:	440mA saturating current that causes 20% rolloff from initial inductance.

Wire insulation & RoHS status not affected by wire color. Wire insulation color may vary depending on availability.

OPERATING TEMPERATURE RANGE: -40°C to 125°C including temp. rise.

Safety Standard Undefined

T\_0\_5757\_C\_0222

<b>Wurth Electronics Midcom Inc.</b>  Watertown, SD USA Toll Free: 800-643-2661 Fax: 605-886-4486	Unless otherwise specified, tolerances are as follows: Angles: $\pm 1^\circ$ Fractions: $\pm 1/64$ Decimals: $\pm .005$ (.127mm)      Footprint: $\pm .001$ (.03mm)		<b>more than you expect</b>	
	Drawing Title <b>Transformer</b>		Drawing Number <b>750313738</b>	Rev. <b>02</b>
This drawing is dual dimensioned. Dimensions in brackets are in millimeters		Revisions: See Sheet 1		Scale ----      Spec Sheet 1 of 1

Engineer:JJB

03/07/2013