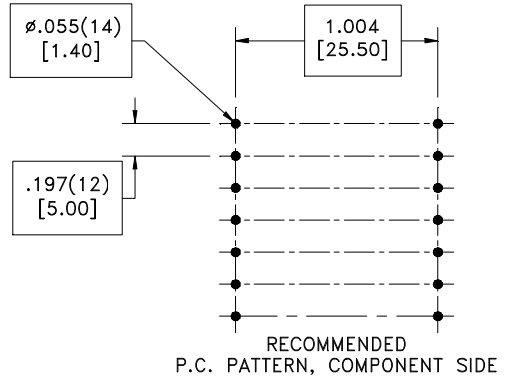
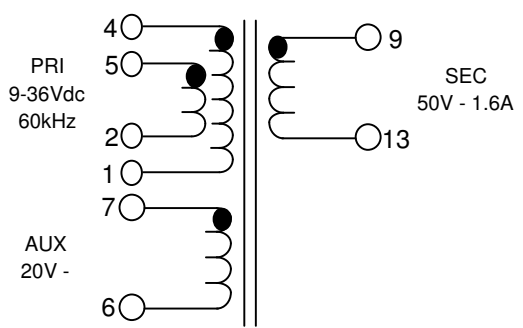
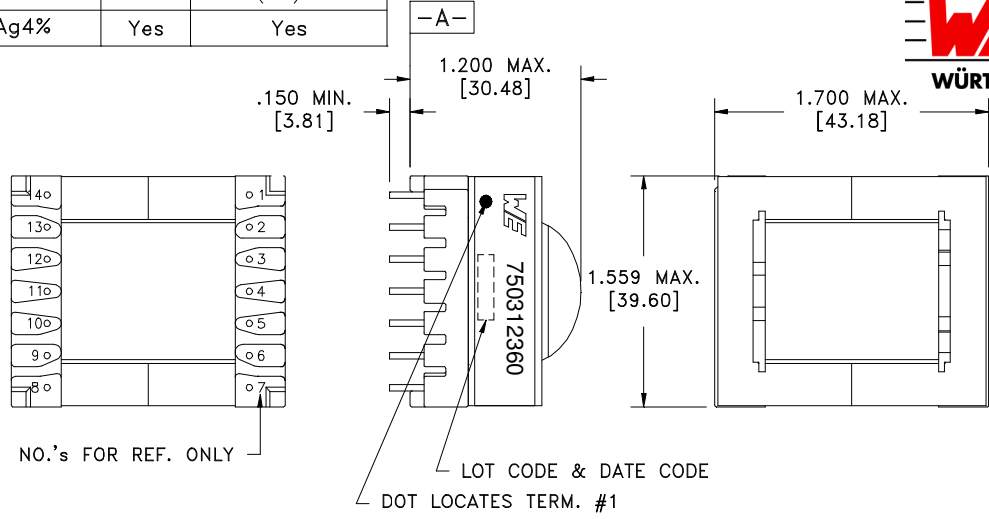


CUSTOMER TERMINAL	RoHS	LEAD(Pb)-FREE
Sn96%, Ag4%	Yes	Yes



**ELECTRICAL SPECIFICATIONS @ 25°C unless otherwise noted:**

D.C. RESISTANCE (@20°C):	4-1 (1+2, 4+5), 0.009 Ohms max. 9-13 , 0.025 Ohms max. 7-6 , 0.025 Ohms max.
DIELECTRIC RATING:	3000VAC, 1 minute tested by applying 3750VAC for 1 second between pins 4-9 (tie 1+2, 4+5, 5+6). 500VAC, 1 minute tested by applying 625VAC for 1 second between pins 1-7 (tie 1+2, 4+5).
INDUCTANCE:	14µH ±10%, 10KHz, 100mVAC, 0mADC, 4-1(1+2, 4+5), Ls.
SATURATION CURRENT:	>20A saturating current that causes 20% rolloff from initial inductance.
LEAKAGE INDUCTANCE:	400nH typ., 600nH max., 100KHz, 10mVAC, 4-1(1+2, 4+5, 6+7, 9+13), Ls.
URNS RATIO:	( 4-1 ):( 5-2 ), ( 1 ):(1.00), ±1%. ( 4-1 ):( 9-13 ), ( 1 ):(1.00), tie(1+2, 4+5), ±1%. ( 4-1 ):( 7-6 ), ( 2.5 ):(1.00), ±1%.

Preliminary

- Reinforced insulation for a primary circuit at a working voltage of 36VDC.

OPERATING TEMPERATURE RANGE: -40°C to 125°C including temp. rise.  
Safety Standard Undefined

PC1\_0\_5455

<b>WE-Midcom, Inc.</b> Watertown, SD USA Toll Free: 800-643-2661 Fax: 605-886-4486	Unless otherwise specified, tolerances are as follows: Angles: ±1°      Fractions: ±1/64 Decimals: ±.005 (.127mm)		<b>WE-Midcom, Inc.</b>	
	Drawing Title <h2 style="text-align: center;">Transformer</h2>		Drawing Number <h2 style="text-align: center;">750312360</h2>	Rev. <h2 style="text-align: center;">01</h2>
This drawing is dual dimensioned. Dimensions in brackets are in millimeters	Revisions: See Sheet 1		Scale ----	Sheet 2 of 5
Engineer:ANC			06/02/2011	