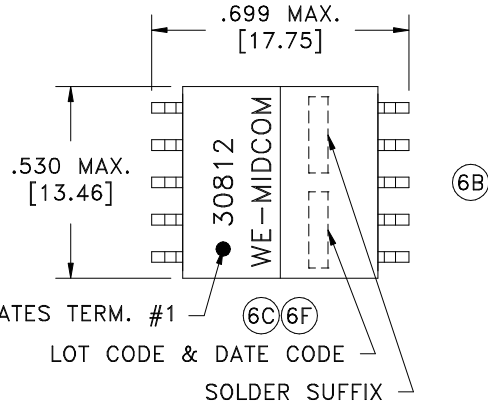
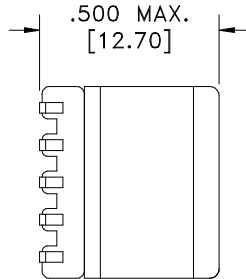
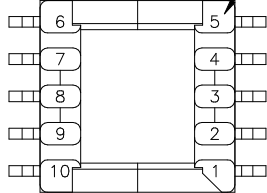
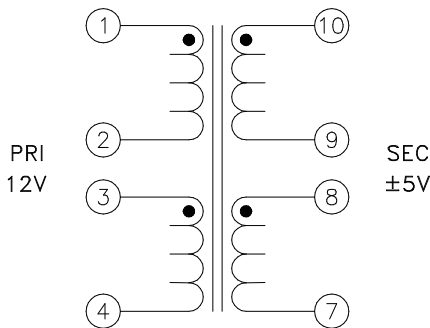


SOLDER SUFFIX	CUSTOMER TERMINAL	RoHS	LEAD(Pb)-FREE	(6F)
	Sn63%, Pb37%	No	No	
LF1	Sn96%, Ag4%	Yes	Yes	

TERM. NO.'s FOR REF. ONLY

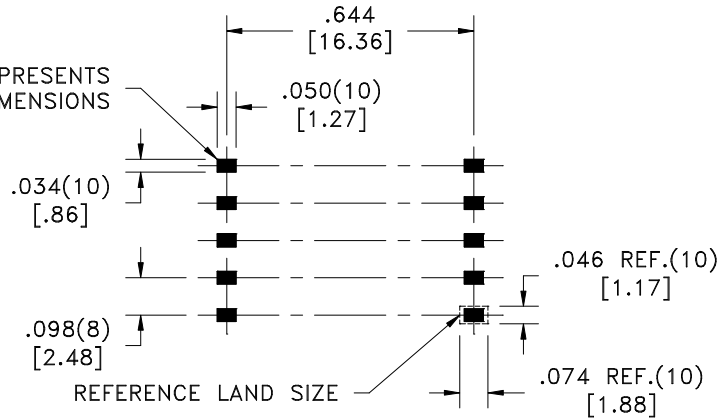


DOT LOCATES TERM. #1 (6C) (6F)  
 LOT CODE & DATE CODE  
 SOLDER SUFFIX



Tie terminals 9+8, 2+3 on PC Board

AREA REPRESENTS  
 TERMINAL PAD DIMENSIONS



CUSTOMER TO DETERMINE LAND LAYOUT

(6E)

ELECTRICAL SPECIFICATIONS @ 25°C unless otherwise noted:

- D.C. RESISTANCE (@20°C):  
 1-2, 0.290 ohms max.  
 3-4, 0.290 ohms max.  
 10-9, 0.230 ohms max.  
 8-7, 0.230 ohms max.
- DIELECTRIC RATING: 500VDC for 1 second between PRI-SEC.
- INDUCTANCE: 600uH min., 10kHz, 100mVAC, 1-2, Ls.
- (6F) TURNS RATIO:  
 (1-2):(3-4) = 1:1, ±1%.  
 (1-2):(10-9) = 1.5:1, ±1%.  
 (1-2):(8-7) = 1.5:1, ±1%.

(6G) OPERATING TEMPERATURE RANGE: -40°C to +125°C including temp rise.

Midcom p/n 30812R-LF1 is eiSos p/n: 750030812.

DETAILS SUBJECT TO CHANGE

Unless otherwise specified: Tolerances: Angles: ±1° Fractions: ±1/64 Decimals: ±.005[.13]	DRAWING TITLE <h2 style="text-align: center;">TRANSFORMER</h2>		PART NO. (6F) REV. <h2 style="text-align: center;">30812R/-LF1</h2> 6G 3/09	PART # 30812R/-LF1
	eiSos p/n: 750030812			

This drawing is dual dimensioned.  
 Dimensions in brackets are in millimeters.