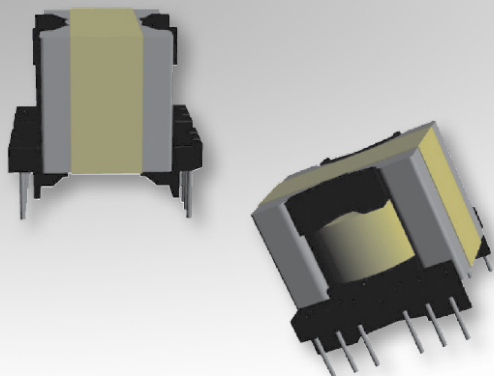


# Bobbin Packages

## PQ2620

12-Terminal, THT, Vertical



### Characteristics:

This TH PQ2620 package was developed for functional insulation cases and compact footprint requirements. It features self-shielding cores for EMI improvement, large core cross-sectional area for high power density, and many terminals for multiple outputs, split coils, or parallel high current winds.

### Applications:

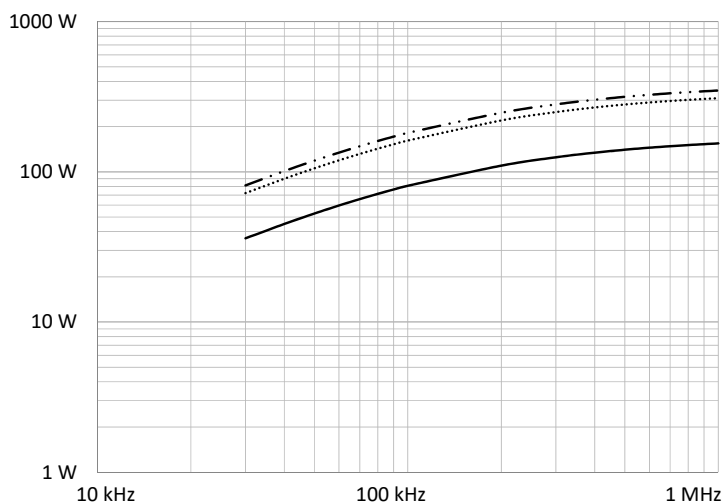
- DC/DC converter
- Industrial controls
- Lighting
- White goods
- Telecom
- PFC

### Technical Data:

Order Code	Type of Insulation	Winding Width (mm)	Winding Build (mm)	Winding Perimeter (mm)	A <sub>e</sub> (mm <sup>2</sup> )	L <sub>e</sub> (mm)	V <sub>e</sub> (mm <sup>3</sup> )	Core Order Code (Power)
070-7149	Functional	8.99	3.76	44.58	119	46.3	5510	150-0693

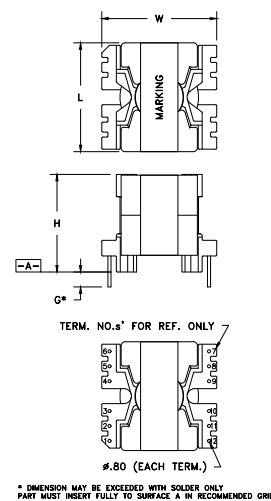
Order Code	L (mm)	W (mm)	H (mm)	G (mm)
070-7149	29.2 max.	30.35 max.	25.9 max.	3.3 ±0.3

### Estimated Maximum Power Level:



— Half-Bridge / Forward    ..... Push-Pull    — DC-DC Flyback

### Dimensions:



### Footprint (mm):

