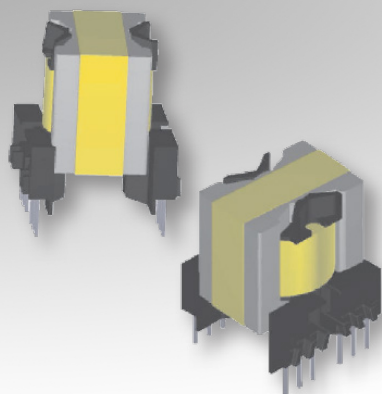


Bobbin Packages

PQ2625

12-Terminal EXT, THT, Vertical



NEW!

Characteristics:

This TH PQ2625 package was developed for special safety cases and compact footprint requirements. It features self-shielding cores for EMI improvement, large core cross-sectional area for high power density, and many terminals for multiple outputs, split coils, or parallel high current winds.

Applications:

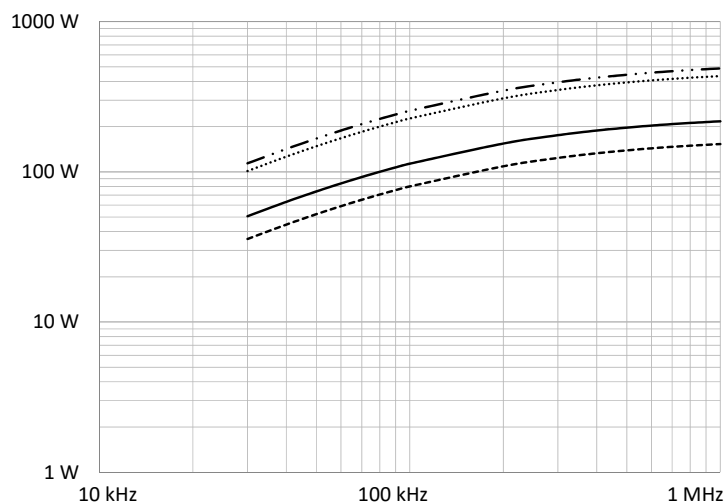
- Offline
- Industrial controls
- Lighting
- Metering
- White goods
- Telecom
- Charging
- Stand-by power

Technical Data:

Order Code	Type of Insulation	Winding Width (mm)	Winding Build (mm)	Winding Perimeter (mm)	A _e (mm ²)	L _e (mm)	V _e (mm ³)	Core Order Code (Power)
070-6952	Reinforced	13.59	3.51	45.57	118	55.5	6549	150-2239

Order Code	L (mm)	W (mm)	H (mm)	G (mm)
070-6952	29.2 max.	32.5 max.	35.2 max.	5 ±0.2

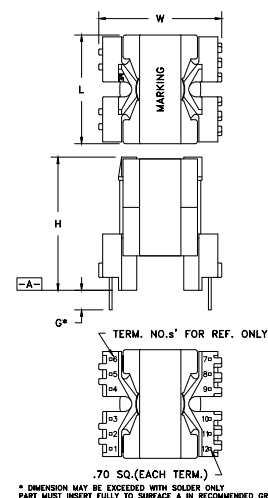
Estimated Maximum Power Level:



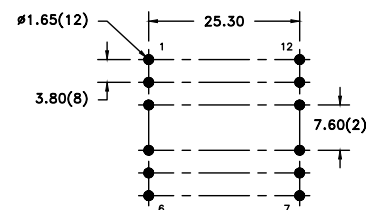
— Half-Bridge / Forward Push-Pull
 --- DC-DC Flyback -.-.- Offline Flyback

All curves are DC-DC unless otherwise noted. For offline applications, the power level must be derated as shown in the flyback curves.

Dimensions:



Footprint (mm):



RECOMMENDED P.C. PATTERN, COMPONENT SIDE
 TOLERANCE: ±.03