

检测报告
Test Report

报告编号 A2220053815101ER2

第 1 页共 15 页

Report No. A2220053815101ER2

Page 1 of 15

报告抬头公司名称 伍尔特电子（深圳）有限公司
Company Name shown on Report WURTH ELECTRONICS(SHENZHEN)CO.,LTD.
地址 深圳市龙岗区坪地埔仔路 22 号创世纪种业大厦 1-3 层
Address 1-3ND FLOOR, CHUANGSHIJI BUILDING, NO#22
PINGDI PUZAI ROAD, LONGGANG, SHENZHEN

以下测试之样品及样品信息由申请者提供并确认

The following sample(s) and sample information was/were submitted and identified by/on the behalf of the client

样品名称 Sample Name RSTV series
型号 Type 471018264153
样品接收日期 2022.02.18
Sample Received Date Feb. 18, 2022
样品检测日期 2022.02.18-2022.03.29
Testing Period Feb. 18, 2022-Mar. 29, 2022

检测要求 Test Requested

序号 No.	测试项目 Test Item
1	太阳辐射试验 Solar radiation test

检测结果：请参见后续页面。Test Result(s): Please refer to the following pages.

本报告于原报告(报告编号 A2220053815101ER1 基础上更新了“测试条件”。本报告替换原报告 A2220053815101ER1 自本报告签发之日起，原报告 A2220053815101ER1 作废。

This testing report revised “Test Condition” based on the original report of No. A2220053815101ER1. This testing report displaces the original one which was invalid since the date of this testing report released.

批准
Approved by 赵跃磊日期 2022.04.07
Date Apr. 7, 2022

赵跃磊
Zhao Yue Lei
授权签字人
Approved Signatory
上海华测品标检测技术有限公司
Centre Testing International Pinbiao
(Shanghai) Inspection & Testing Services

No.RBF9A1F964
上海市浦东新区宁桥路 999 号 5 幢一楼
1 floor,5 building, No.999, Ningqiao Road,
Pudong New District, Shanghai.

检测报告 Test Report

报告编号 A2220053815101ER2

第 2 页共 15 页

Report No. A2220053815101ER2

Page 2 of 15

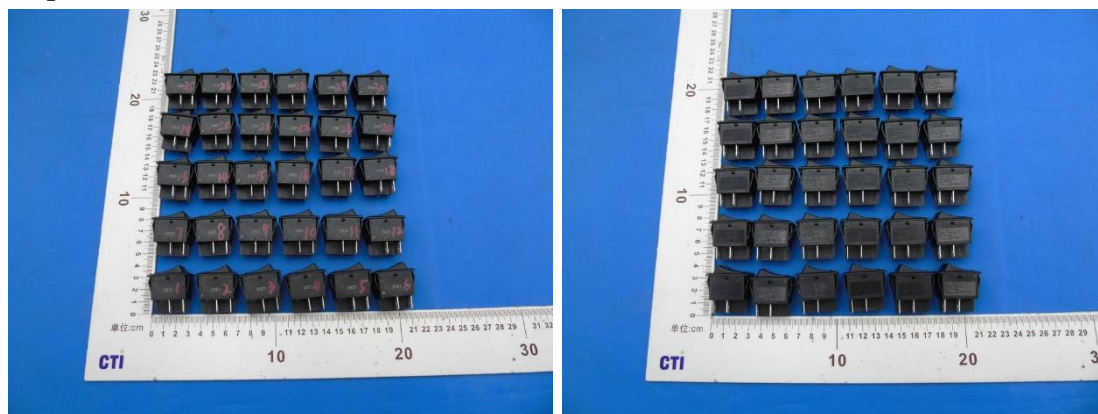
测试样品

Tested Sample(s)

样品编号 Sample No.	样品名称 Sample Name	样品型号 Type
A2220053815101001-1~30	RSTV series	471018264153

样品图片

Sample Photo(s)



A2220053815101001-1~30

检测报告

Test Report

报告编号 A2220053815101ER2

第 3 页共 15 页

Report No. A2220053815101ER2

Page 3 of 15

测试项目：太阳辐射试验

Test Item: Solar radiation test

1. 测试设备 Test Equipment

设备名称 Equipment Name	型号 Model	品牌 brand	校准日期 Calibration date	有效期 Valid to
阳光模拟试验箱 Sunlight Simulation Chamber	Solar S/1000	伟思 Vötsch	2021.9.3	2022.9.2
绝缘电阻仪 Insulation Resistance Tester	TOS7200	菊水 Kikusui	2021.4.1	2022.3.31
耐压测试仪 Withstand Voltage Tester	TOS5301	菊水 Kikusui	2021.4.1	2022.3.31
直流电阻测试仪 Dc resistance tester	TH2515	TONGHUI	2021.4.1	2022.3.31

2. 环境条件 Environmental Conditions

温度：(18~28)℃； 湿度：(25~75)%RH

Temperature: (18~28)℃; Humidity: (25~75)%RH

3. 测试标准 Test Standard

参考 IEC60068-2-5:2018 程序 Sa2;

Reference IEC60068-2-5:2018 Procedure Sa2;

4. 测试条件 Test Condition

-a) 辐射能量：1090 W/m²(设备总辐射量为 1120W/m²，根据最新标准要求把辐射量调整到: 1090 W/m²);

Radiation Energy: 1090 W/m²(The total radiation is 1120W/m², adjusted to 1090 W/m² according to the latest standards.)

-b) 温度：40℃±2℃;

Temperature: 40℃±2℃;

-c) 湿度：90% ±10%RH;

Humidity: 90% ±10%RH;

-d) 光照：20 小时;

Illumination: 20h;

-e) 黑暗：4 小时 温度：25℃;

Dark: 4h Temperature: 25℃;

检测报告 Test Report

报告编号 A2220053815101ER2

第 4 页共 15 页

Report No. A2220053815101ER2

Page 4 of 15

-f) 循环数: 25 循环;

Cycle number: 25 cycles;

-g) 设备性能 Equipment performance

光谱范围 Spectral region	Ultra-violet B ^a 紫外线 B ^a	Ultra -violet A 紫外线 A	Visible 可见光	Infra-red 红外线	Total radiation 总辐射
带宽 Bandwidth	280nm-320nm	320nm~400nm	400nm-780nm	780nm-3000nm	280nm~3000nm
辐照度 Irradiance	5W/m ²	63W/m ²	560W/m ²	492W/m ²	1120W/m ²
占总辐射比例 Proportion of total radiation	0.36%	6.64%	53%	40%	100%

-h) 灯泡: 卤素灯

Bulb: Halogen lamp



规格 Specification : OSRAM HMI 2500 W/DXS

检测报告

Test Report

报告编号 A2220053815101ER2

第 5 页共 15 页

Report No. A2220053815101ER2

Page 5 of 15

5. 测试结果 Test Result(s)

样品编号 Sample No.	判定要求 Criterion	测试结果(目视检查) Test Result(s) (Visual inspection)
A2220053815101001-1~ A2220053815101001-30	1、目视检测样品外观不应有开裂，变形和气泡现象。 No cracking, deformation, bubble phenomenon should be found on samples' surface(s) by visual inspection. 2、结构件不应松动。 No Loosening should be found on structural parts.	PASS

耐电压 Withstand voltage

样品编号 Sample No.	测试要求 Test Condition	判定要求 Criterion	测试结果 Test Result(s)
A2220053815101001-1~ A2220053815101001-30	pin-pin AC 1500V 60s	无击穿 No breakdown	PASS
	pin-case AC 3000V 60s	无击穿 No breakdown	PASS

绝缘电阻 Insulation Resistance

样品编号 Sample No.	绝缘电阻 Insulation Resistance 500V DC 60s pin-pin	
	判定要求 Criterion	测试结果 Test Result(s)
A2220053815101001-1~ A2220053815101001-30	绝缘电阻 > 100MΩ Insulation Resistance > 100MΩ	PASS

检测报告

Test Report

报告编号 A2220053815101ER2

第 6 页共 15 页

Report No. A2220053815101ER2

Page 6 of 15

接触电阻 Contact Resistance

样品编号 Sample No.	判定要求 Criterion	测试结果 Test Result(s)
A2220053815101001-1~ A2220053815101001-30	接触电阻 < 20mΩ Contact Resistance < 20mΩ	PASS

测试项目 Test Item	测试方法 Test method	结果 Test Result(s)	结论 Conclusion
金属卤素灯测试 Solar Radiation Test	参考 IEC60068-2-5:2018 程序 Sa2; Reference IEC60068-2-5:2018 Procedure Sa2;	见结果 See Result	Pass

注 Note: 合格: 满足要求 Pass :Meet the requirements;

不合格: 不满足要求 Fail: Does not meet the requirements;

/: 不适用于判定 /: Not Apply to the judgment.

检测报告

Test Report

报告编号 A2220053815101ER2

第 7 页共 15 页

Report No. A2220053815101ER2

Page 7 of 15

绝缘电阻 Insulation Resistance

样品编号 Sample No.	位置 location	绝缘电阻 Insulation Resistance 500V DC 60s pin-pin		
		判定要求 Criterion	测试前 Before the test	测试后 After the test
A2220053815101001-1	a	绝缘电阻 > 100MΩ Insulation Resistance > 100MΩ	>5000MΩ	>5000MΩ
	b		>5000MΩ	>5000MΩ
A2220053815101001-2	a		>5000MΩ	>5000MΩ
	b		>5000MΩ	>5000MΩ
A2220053815101001-3	a		>5000MΩ	>5000MΩ
	b		>5000MΩ	>5000MΩ
A2220053815101001-4	a		>5000MΩ	>5000MΩ
	b		>5000MΩ	>5000MΩ
A2220053815101001-5	a		>5000MΩ	>5000MΩ
	b		>5000MΩ	>5000MΩ
A2220053815101001-6	a		>5000MΩ	>5000MΩ
	b		>5000MΩ	>5000MΩ
A2220053815101001-7	a		>5000MΩ	>5000MΩ
	b		>5000MΩ	>5000MΩ
A2220053815101001-8	a		>5000MΩ	>5000MΩ
	b		>5000MΩ	>5000MΩ
A2220053815101001-9	a		>5000MΩ	>5000MΩ
	b		>5000MΩ	>5000MΩ
A2220053815101001-10	a		>5000MΩ	>5000MΩ
	b		>5000MΩ	>5000MΩ
A2220053815101001-11	a		>5000MΩ	>5000MΩ
	b		>5000MΩ	>5000MΩ
A2220053815101001-12	a		>5000MΩ	>5000MΩ
	b		>5000MΩ	>5000MΩ
A2220053815101001-13	a		>5000MΩ	>5000MΩ
	b		>5000MΩ	>5000MΩ
A2220053815101001-14	a		>5000MΩ	>5000MΩ
	b		>5000MΩ	>5000MΩ

检测报告

Test Report

报告编号 A2220053815101ER2

第 8 页共 15 页

Report No. A2220053815101ER2

Page 8 of 15

A2220053815101001-15	a	绝缘电阻 > 100MΩ Insulation Resistance > 100MΩ	>5000MΩ	>5000MΩ
	b		>5000MΩ	>5000MΩ
A2220053815101001-16	a		>5000MΩ	>5000MΩ
	b		>5000MΩ	>5000MΩ
A2220053815101001-17	a		>5000MΩ	>5000MΩ
	b		>5000MΩ	>5000MΩ
A2220053815101001-18	a		>5000MΩ	>5000MΩ
	b		>5000MΩ	>5000MΩ
A2220053815101001-19	a		>5000MΩ	>5000MΩ
	b		>5000MΩ	>5000MΩ
A2220053815101001-20	a		>5000MΩ	>5000MΩ
	b		>5000MΩ	>5000MΩ
A2220053815101001-21	a		>5000MΩ	>5000MΩ
	b		>5000MΩ	>5000MΩ
A2220053815101001-22	a		>5000MΩ	>5000MΩ
	b		>5000MΩ	>5000MΩ
A2220053815101001-23	a		>5000MΩ	>5000MΩ
	b		>5000MΩ	>5000MΩ
A2220053815101001-24	a		>5000MΩ	>5000MΩ
	b		>5000MΩ	>5000MΩ
A2220053815101001-25	a		>5000MΩ	>5000MΩ
	b		>5000MΩ	>5000MΩ
A2220053815101001-26	a		>5000MΩ	>5000MΩ
	b		>5000MΩ	>5000MΩ
A2220053815101001-27	a		>5000MΩ	>5000MΩ
	b		>5000MΩ	>5000MΩ
A2220053815101001-28	a		>5000MΩ	>5000MΩ
	b		>5000MΩ	>5000MΩ
A2220053815101001-29	a		>5000MΩ	>5000MΩ
	b		>5000MΩ	>5000MΩ
A2220053815101001-30	a	>5000MΩ	>5000MΩ	
	b	>5000MΩ	>5000MΩ	

检测报告

Test Report

报告编号 A2220053815101ER2

第 9 页共 15 页

Report No. A2220053815101ER2

Page 9 of 15

接触电阻 Contact Resistance

样品编号 Sample No.	位置 location	判定要求 Criterion	测试前 Before the test	测试后 After the test
A2220053815101001-1	a	接触电阻 < 20mΩ Contact Resistance < 20mΩ	0.68mΩ	0.81mΩ
	b		0.84mΩ	1.04mΩ
A2220053815101001-2	a		0.73mΩ	1.92mΩ
	b		0.79mΩ	1.80mΩ
A2220053815101001-3	a		0.65mΩ	1.95mΩ
	b		0.93mΩ	2.38mΩ
A2220053815101001-4	a		0.84mΩ	1.57mΩ
	b		0.60mΩ	0.84mΩ
A2220053815101001-5	a		1.23mΩ	0.82mΩ
	b		0.85mΩ	0.98mΩ
A2220053815101001-6	a		0.95mΩ	1.99mΩ
	b		1.04mΩ	1.26mΩ
A2220053815101001-7	a		0.95mΩ	1.33mΩ
	b		0.95mΩ	1.30mΩ
A2220053815101001-8	a		0.80mΩ	1.64mΩ
	b		0.94mΩ	1.81mΩ
A2220053815101001-9	a		0.64mΩ	1.28mΩ
	b		1.02mΩ	1.84mΩ
A2220053815101001-10	a		0.78mΩ	0.90mΩ
	b		1.36mΩ	2.31mΩ
A2220053815101001-11	a		0.92mΩ	1.52mΩ
	b		1.29mΩ	1.24mΩ
A2220053815101001-12	a		1.18mΩ	1.99mΩ
	b		1.05mΩ	2.21mΩ
A2220053815101001-13	a		1.45mΩ	1.53mΩ
	b		1.12mΩ	1.54mΩ
A2220053815101001-14	a		0.58mΩ	1.49mΩ
	b		0.62mΩ	0.93mΩ
A2220053815101001-15	a		0.82mΩ	2.11mΩ
	b		0.80mΩ	1.55mΩ
A2220053815101001-16	a		1.09mΩ	2.30mΩ
	b		0.98mΩ	2.21mΩ

检测报告

Test Report

报告编号 A2220053815101ER2

第 10 页共 15 页

Report No. A2220053815101ER2

Page 10 of 15

A2220053815101001-17	a	接触电阻 < 20mΩ Contact Resistance < 20mΩ	0.78mΩ	1.84mΩ
	b		0.92mΩ	2.33mΩ
A2220053815101001-18	a		1.62mΩ	1.31mΩ
	b		1.02mΩ	1.21mΩ
A2220053815101001-19	a		0.90mΩ	1.01mΩ
	b		0.83mΩ	1.00mΩ
A2220053815101001-20	a		0.77mΩ	1.36mΩ
	b		1.00mΩ	1.54mΩ
A2220053815101001-21	a		0.67mΩ	1.85mΩ
	b		0.66mΩ	1.94mΩ
A2220053815101001-22	a		1.35mΩ	2.49mΩ
	b		1.19mΩ	1.62mΩ
A2220053815101001-23	a		0.90mΩ	1.09mΩ
	b		0.89mΩ	1.13mΩ
A2220053815101001-24	a		0.91mΩ	1.16mΩ
	b		1.04mΩ	1.21mΩ
A2220053815101001-25	a		0.80mΩ	1.23mΩ
	b		1.05mΩ	1.04mΩ
A2220053815101001-26	a		0.71mΩ	1.12mΩ
	b		1.09mΩ	1.14mΩ
A2220053815101001-27	a		1.07mΩ	1.21mΩ
	b		1.01mΩ	1.19mΩ
A2220053815101001-28	a		0.82mΩ	1.53mΩ
	b		1.12mΩ	1.64mΩ
A2220053815101001-29	a		0.82mΩ	1.25mΩ
	b		1.23mΩ	1.34mΩ
A2220053815101001-30	a		0.64mΩ	1.26mΩ
	b		1.09mΩ	1.29mΩ

检测报告 Test Report

报告编号 A2220053815101ER2

第 11 页共 15 页

Report No. A2220053815101ER2

Page 11 of 15

测试图片

Test Photo(s)



测试图片
Test Photo(s)



绝缘电阻 Insulation Resistance
位置 a location a



绝缘电阻 Insulation Resistance
位置 b location b

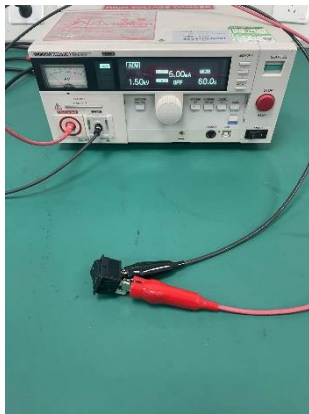
检测报告 Test Report

报告编号 A2220053815101ER2

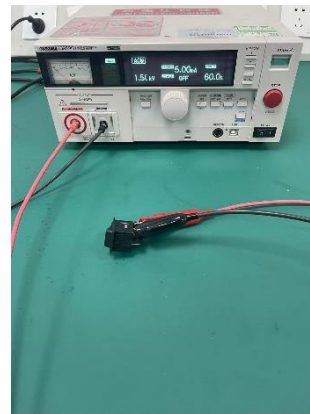
第 12 页共 15 页

Report No. A2220053815101ER2

Page 12 of 15



耐电压 Withstand voltage
pin-pin



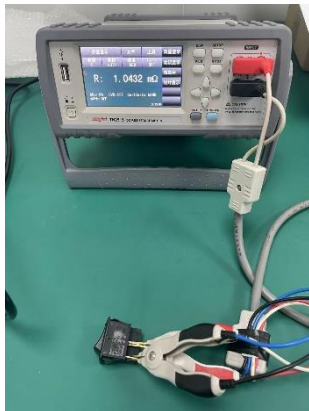
耐电压 Withstand voltage
pin-pin



耐电压 Withstand voltage
pin-case



耐电压 Withstand voltage
pin-case



接触电阻 Contact Resistance
位置 a location a



接触电阻 Contact Resistance
位置 b location b

检测报告 Test Report

报告编号 A2220053815101ER2

第 13 页共 15 页

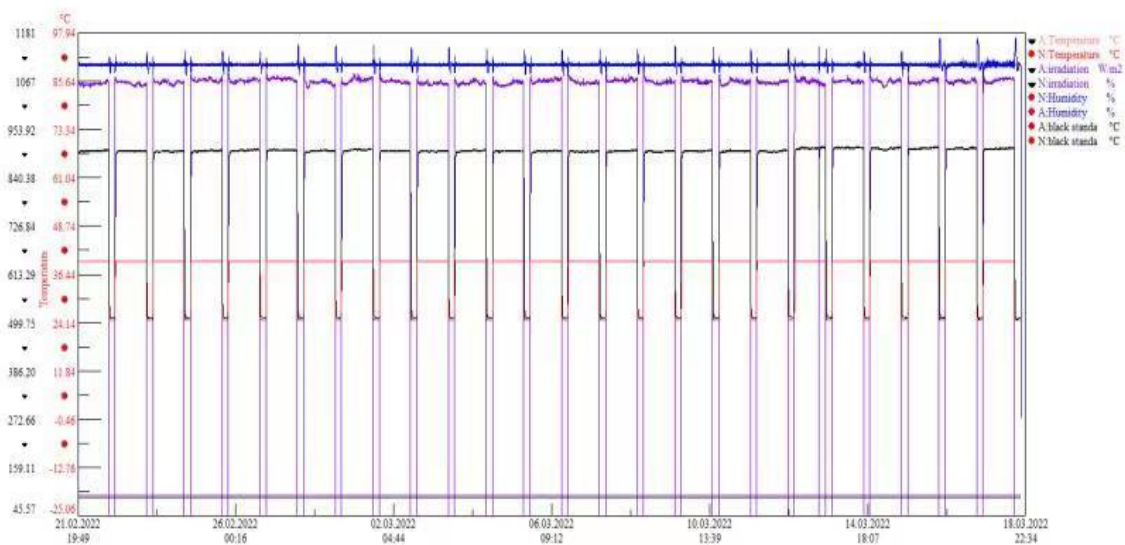
Report No. A2220053815101ER2

Page 13 of 15

测试曲线

Test Curve

SOLAR.S1-[no1] prog.--- arch:IEC60068-2-56a2(高尔特 start:Admin 21.2.2022 18:52 stop:Admin 24.3.2022 21:38



测试曲线

Test Curve

检测报告 Test Report

报告编号 A2220053815101ER2

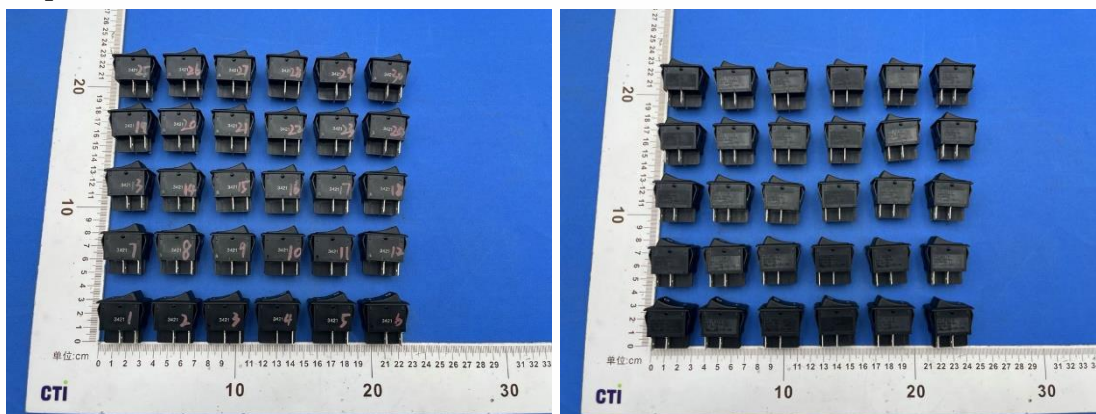
第 14 页共 15 页

Report No. A2220053815101ER2

Page 14 of 15

测试后的样品图片

Sample Photo(s) after the test



A2220053815101001-1~30

备注：本报告中的数据结果供科研、教学、企业内部质量控制、企业产品研发等目的用。

Remark: The testing data and result(s) in this report is(are) just for scientific research, education, internal quality control and product development etc.

*** 报告结束 ***

*** End of Report ***

声明：

Statement:

1.检测报告无批准人签字、“专用章”及报告骑缝章无效；

This report is considered invalid without approved signature, special seal and the seal on the perforation;

2.报告抬头公司名称及地址、样品及样品信息由申请者提供，申请者应对其真实性负责，CTI 未核实其真实性；

Company Name and Address shown on Report, the sample(s) and sample Information was/were provided by the applicant who should be responsible for the authenticity which CTI hasn't verified;

3.本报告检测结果仅对受测样品负责；

The result(s) shown in this report refer(s) only to the sample(s) tested;

4.未经 CTI 书面同意，不得部分复制本报告。

Without written approval of CTI, this report can't be reproduced except in full;

5.如检测报告中的英文内容与中文内容有差异，以中文为准。

In case of any discrepancy between the English version and Chinese version of the testing

检测报告 Test Report

报告编号 A2220053815101ER2

Report No. A2220053815101ER2

第 15 页共 15 页

Page 15 of 15

reports(if generated), the Chinese version shall prevail.