

# SWITCHES

## ILLUMINATED SWITCHES



### Features & Benefits

- Full load life cycle test
- Plastic material UL94 flammability approved
- 3 times reflow on SMT parts
- LED bin code limitation avoiding coloring variation

### Available Products

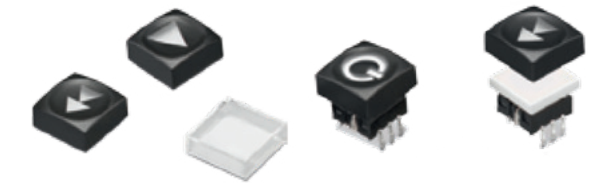
- SMT & THT
- Different LED color options

Special thanks to our customers Syneddyne Systems Pvt. Ltd and Weber Ultrasonics AG for allowing us using their application pictures to show Würth Elektronik product features

### Special Features for the Caps

#### For WS-PBTL and WS-TATL

- 3 times coating on the caps (laser carving)
- Customized laser carving on standard caps (MOQ: 300)
- Customized pantone or RAL cap color coating (MOQ: 1.080)
- Assembled parts on request (MOQ: 1.080)
- New technology "laser etching" on transparent cap



Standard caps



Laser Carving



Laser Etching



Visit our online catalogue for detailed product selection:  
[www.we-online.com/Illuminated](http://www.we-online.com/Illuminated)