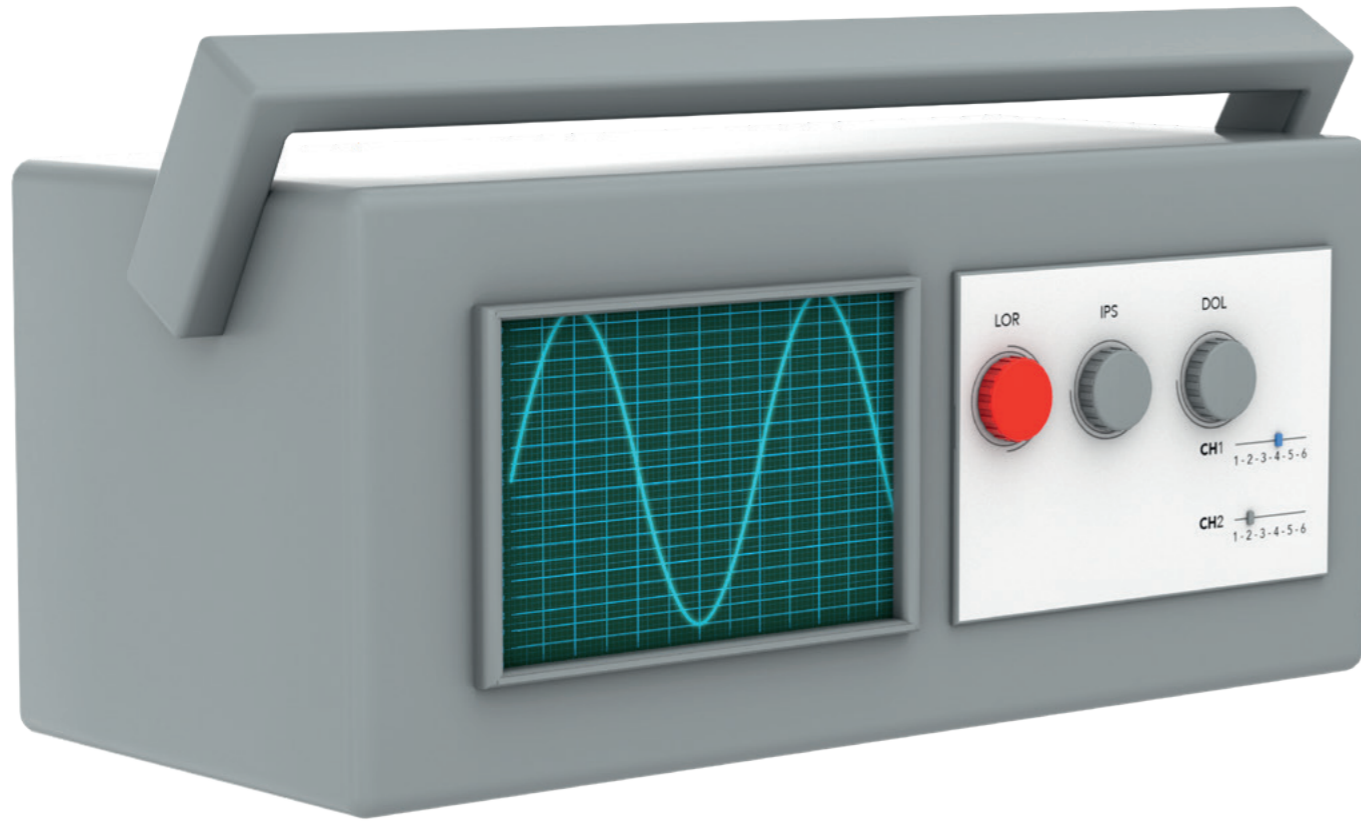


Switches

Incremental Encoder Switches



Mechanical encoders typically are used to sense human adjustment of the device in a clockwise or counter-clockwise direction triggering some action by the digital circuit.



Plain Bushing



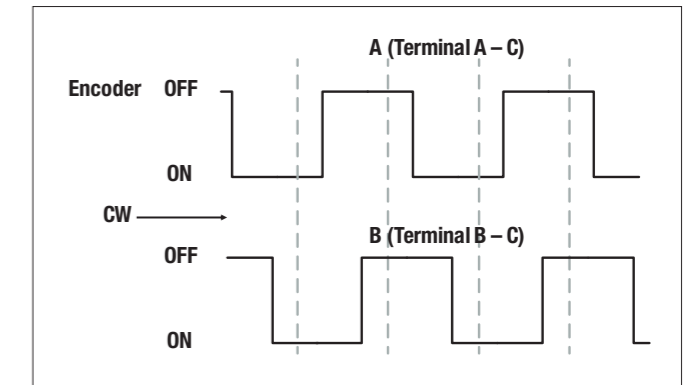
Without Bushing



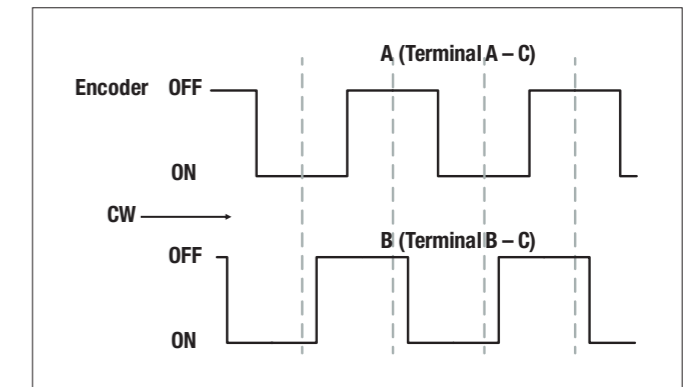
Threaded Bushing

Special Features

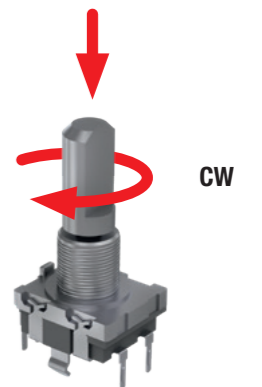
Available Schematics



A leads B



B leads A



Features & Benefits

- Full load life cycle test
- 48 h salt spray test
- Plastic material UL94 flammability standard
- Threaded bushing type with nut and washer included
- Without switching function on request (MOQ: 5.000)
- Without detent on request (MOQ: 5.000)

Available Products

- Different pulses
- 1:1 or 1:2 detent combination
- Different schematics available (A leads B or B leads A)
- With switching function
- Threaded/plain bushing and without bushing available



Visit our online catalogue for detailed product selection:
www.we-online.com/ENCODER