

Vertical type

Side push type

Tamper detection is the ability of a device to sense an active attack to the device and the threat of the attack should initiate an event (e.g. alarm, shutdown of the device).

Features & Benefits

- Full load life cycle test
- 48 h salt spray test
- Plastic material UL94 flammability standard
- 5 times reflow on SMT parts
- Low activation and return force
- Suitable for static use
- Application categories:
 - Detection / endstop
 - Power ON / OFF
 - Tamper detection (example above)

Available Products

Detector Switches

- SPST – Normal open type
- SPST – Normal closed type
- Horizontal & vertical operation



Visit our online catalogue for detailed product selection:
www.we-online.com/DETECTOR

Micro Switches

Vertical Push Types



Pin plunger



Lever

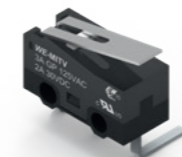


Roller lever

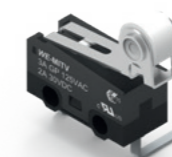
Horizontal Push Types



Pin plunger



Lever



Roller lever

	WE Detector Switch	WE Micro Switch
Application categories	Detection/endstop, Power ON/OFF, tamper detection	
Actual product size	Up to 5.7 x 4.0 mm	12.8 x 5.8 mm
Safety certificate	No	UL 61058-1
Circuit schematic	SPST (NO, NC) SPDT	SPDT
Terminal type	SMT	THT

Features & Benefits

- Trackable safety certification on UL/IEC 61058
- Full load life cycle test
- 48 h salt spray test
- Plastic material UL94 flammability standard
- Low activation and return force
- Suitable for static use

Available Products

Micro Switches

- Actuator type
- Roller type
- Lever type
- Horizontal & vertical operation



Visit our online catalogue for detailed product selection:
www.we-online.com/MICRO-SWITCH