

ON OFF ON OFF ON OFF ON OFF ON OFF ON OFF ON OFF
 OFF ON OFF ON OFF ON OFF ON OFF ON OFF ON OFF ON OFF
 ON OFF ON OFF ON OFF ON OFF ON OFF ON OFF ON OFF ON OFF
 OFF ON OFF ON OFF ON OFF ON OFF ON OFF ON OFF ON OFF
 ON OFF ON OFF ON OFF ON OFF ON OFF ON OFF ON OFF ON OFF
 OFF ON OFF ON OFF ON OFF ON OFF ON OFF ON OFF ON OFF
 ON OFF ON OFF ON OFF ON OFF ON OFF ON OFF ON OFF ON OFF
 OFF ON OFF ON OFF ON OFF ON OFF ON OFF ON OFF ON OFF
 ON OFF ON OFF ON OFF ON OFF ON OFF ON OFF ON OFF ON OFF

© eiCan

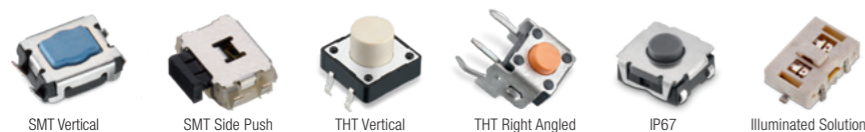
#TIMETO SWITCH
 more
 than you
 expect

Tact Switches

The Tact Switches from Würth Elektronik are characterized by performance stability and long lifetime. All metal elements are corrosion resistant proven by a 48 hours salt spray test. Polyimide tape or silicone rubber protect the switch even in tough environments. The switch range includes various high quality solutions like dip, rotary, detector, micro, slide, rocker switches and encoder. Available from stock. Samples free of charge.

For further information, please visit: www.we-online.com/switch

- IP67
- Long lifetime
- High durability
- Corrosion resistant metal elements
- Full load life cycle test
- Tight tolerance due to automated production
- Various operation force and heights

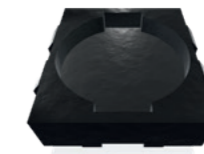


All Metal Parts



- 48 hours salt spray test
- Corrosion resistant

Plastics



- 5 times reflow resistant
- UL flammability approved

Snap Dome (Stainless Steel)

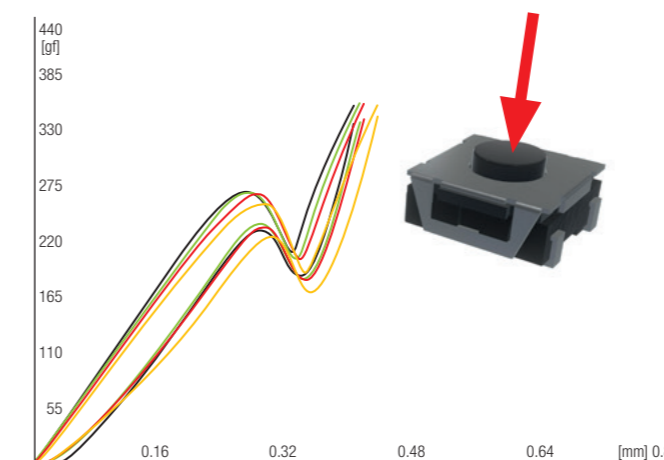


- High performance stability
- Full load life cycle tests
- Less friction

Polyimide Tape / Silicone Rubber



- Protection from environment
- Silicone rubber for tough environments



Characteristics

Automated production

- Reduces the mechanical variation
- Stability of mechanical parameters
- Stable yield rate



Visit our online catalogue for detailed
 product selection:
www.we-online.com/TACT-SWITCH