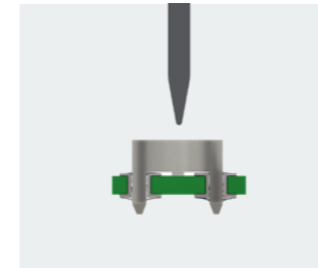
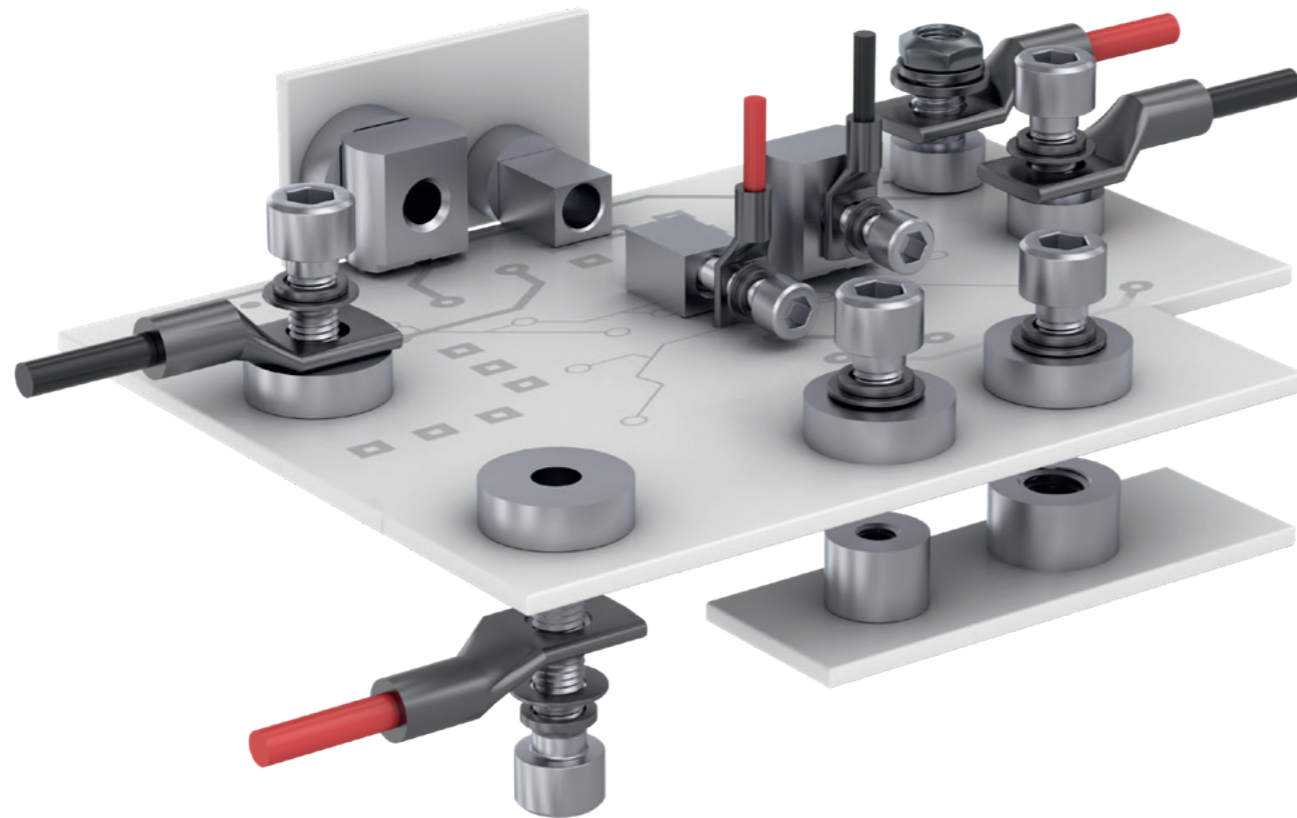
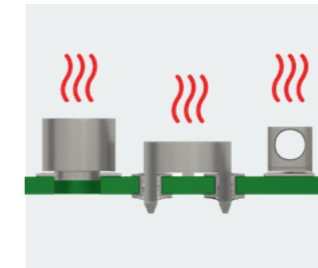


# REDCUBE TERMINALS

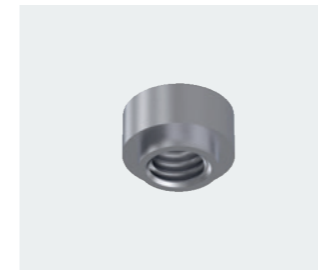
## SMT



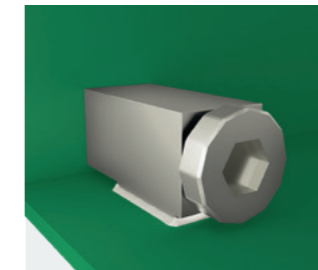
Pick & Place



Reflow Soldering



Ampacity up to 85 A



90° Board-to-Board

### Applications

- High current Wire-to-Board and Board-to-Board connections
- Angled assembling of cable, PCB or housing
- Suitable for IMS circuit boards

### Advantages

- Simple and fast automated assembly
- High packing density
- Efficient and timesaving soldering process
- Angled assembling of cable, PCB or housing
- Tape & Reel

### Features & Benefits

- **REDCUBE SMT** combines the advantages of a fully automatied pick and place mounting in conjunction with high-current technology.
- A large connecting area of **REDCUBE SMT** achieves a low contact resistance and best holding forces.
- The small size of **REDCUBE SMT** allows a high packing density without critical heat development on the PCB.

### Available Products

- WP-SMBU: Internal thread: M3 to M5
- WP-SMSH: External thread: M3 to M5
- WP-SMRT: Reverse type Board-to-Board:  $\varnothing$  3.5 to 6.5 mm
- WP-SMRT: Reverse type Wire-to-Board: M3 to M6
- WP-SMRA: Right angled: M2, M3,  $\varnothing$  3.3
- WA-CLUG: Cable lugs M3 M10, 1.5 mm<sup>2</sup> to 95 mm<sup>2</sup>
- Rated current: up to 85 A

