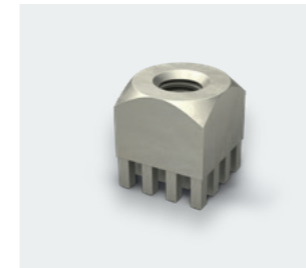
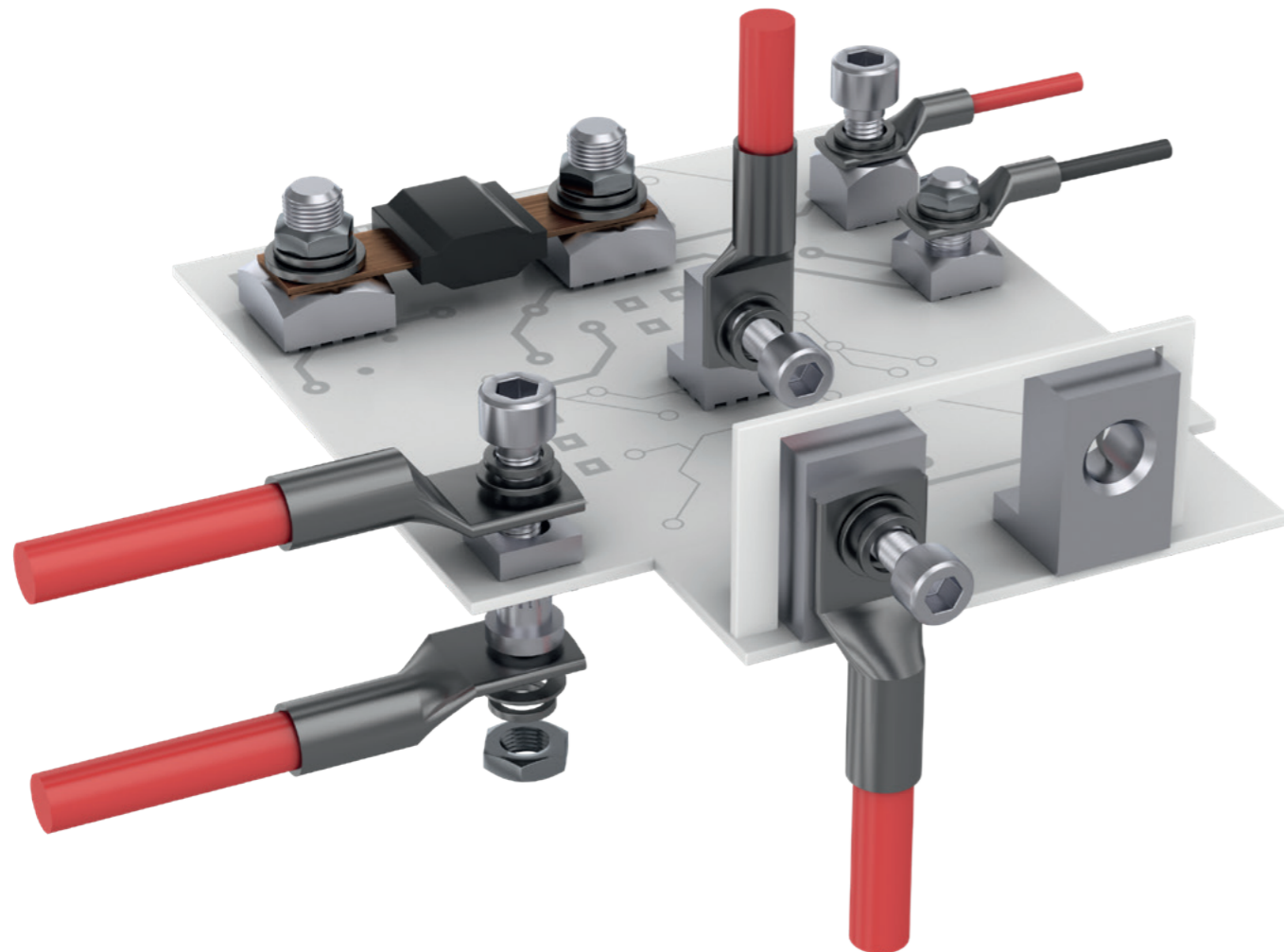


# REDCUBE TERMINALS

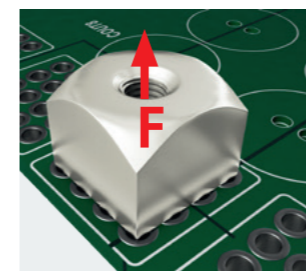
## PRESS-FIT WIRE-TO-BOARD



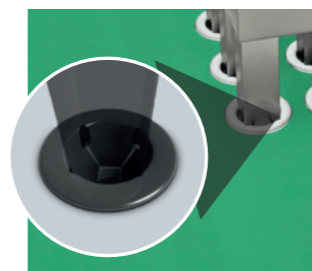
Ampacity up to 500 A



Simple & Quick Processing



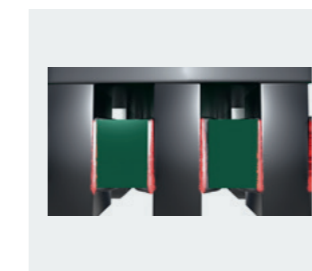
Extraction Force 10 kg / Pin



Press-Fit Technology



Lowest Heat Development



Cold Welding between Materials

### Applications

- High current Wire-to-Board & Board-to-Board connections
- Mounting of copper bars on PCBs
- Angled assembling of cable, PCB and housing
- Mounting of IGBT modules

### Advantages

- Simple & quick processing
- No cold solder joints
- High process safety
- Low self heating

### Characteristics

- Homogeneous material transition between pin and through-hole plating
- Contact resistance less than 200  $\mu\Omega$
- Gastight electrical and mechanical connection
- Extremely strong mechanical connection

### Features & Benefits

- Pressing the pins into the PCB, a high friction between pin and plated through-hole generates a homogeneous cold-welding between materials. Result is a gastight, strong mechanical connection with contact resistance less than 200  $\mu\Omega$ .
- With the lowest Failure-In-Time value, **REDCUBE PRESS-FIT** is the most reliable technology on the PCB. The FIT value is up to 30 times better than that of a SMD solder joint.
- **REDCUBE PRESS-FIT** is suitable for two side mounting and allows very compact design of modules.
- Mounting of laminated fuses is also possible.

### Available Products

- WP-BUCF, WP-BUTR, WP-BUFU: Internal thread M2.5 to M10
- WP-SHFU: External thread M3 to M10
- WP-RAFU, WP-RATR: Right angled M3 to M10
- WP-RAFE: Right angled edge position M3
- WP-TGCF, WP-TGTR, WP-TPSE: Two-part M3 to M8;  $\phi$  3.2 to 10.5 mm
- WA-CLUG: Cable lugs M3 up to M10, 1.5 mm<sup>2</sup> to 95 mm<sup>2</sup>
- Customized parts possible on request
- Rated current up to 500 A (+20 °C)

