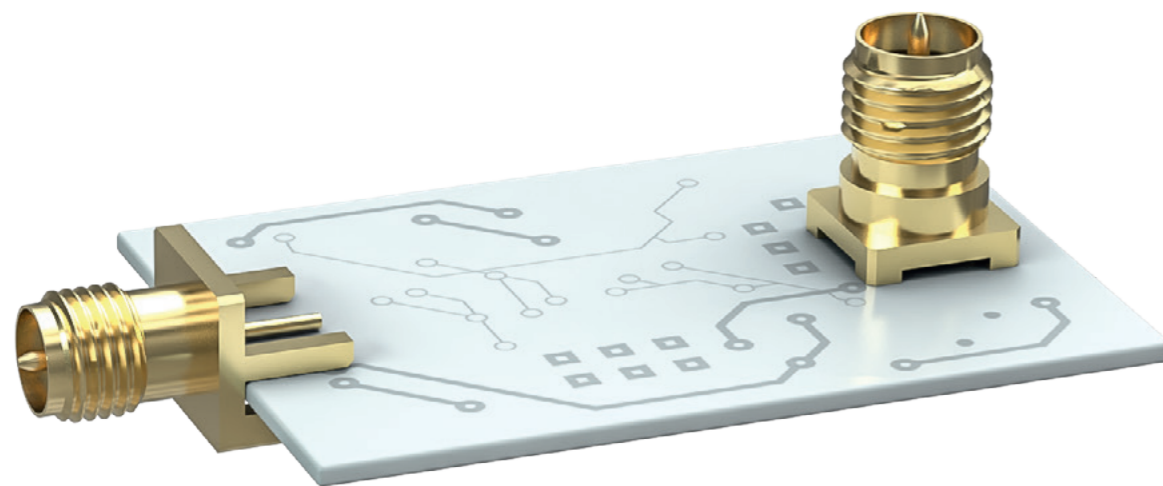


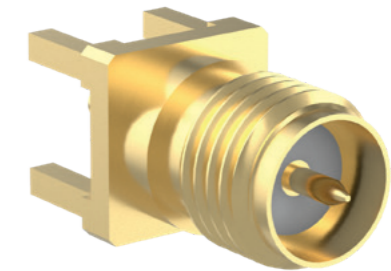
Connectors

Reverse Polarity SMA Coaxial Connectors

WR-RPSMA



Special Features



Reverse gender SMA interface. Appropriate for mistake proofing.

Accessories



Torque wrench available

Features & Benefits

- Interface in accordance with MIL-STD-348
- Interface for DC to 18 GHz, 50 Ω
- High mechanical stability in intense vibration environment
- High axial force and torque
- Excellent electrical performance and high mating cycles up to 500 cycles minimum

Available Products

- THT & SMT mount
- Straight, right angled, end launch, rear mounted bulkhead



Visit our online catalogue for detailed product selection:
www.we-online.com/RPSMA