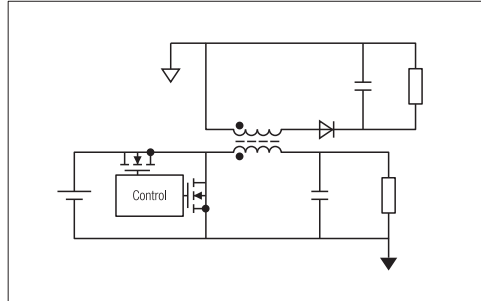
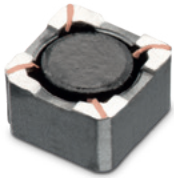


# Overview

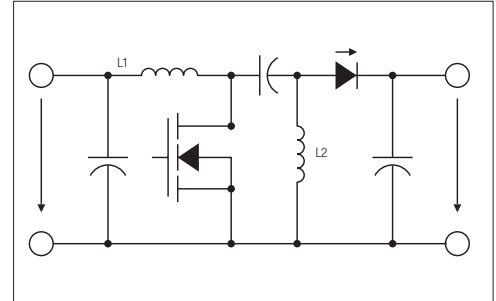
## Coupled Inductors



**Dual Output Isolated Buck Converter**

**Characteristics**

- 5 x 5 x 2 mm up to 21 x 18 x 13 mm
- Different core materials available:  
NiZn-ferrite, iron powder, metal alloy powder
- Low leakage inductance
- Isolation voltage: up to 2 kVrms



**SEPIC**

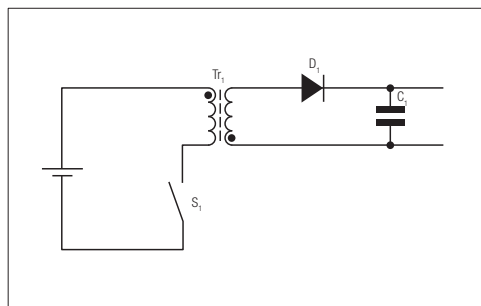
**Application**

- SEPIC, Zeta or Cúk-converter
- Buck-boost converter
- Buck converter with second isolated output
- Flyback converters
- Common mode choke

SEPIC Design with REDEXPERT:  
[www.we-online.com/re-sepic](http://www.we-online.com/re-sepic)



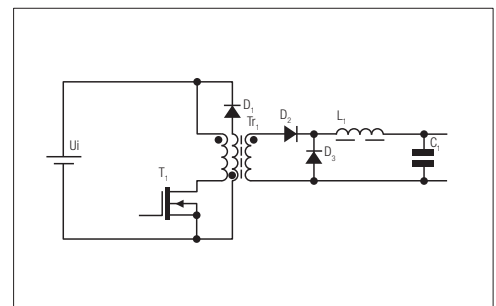
## Transformers for DC/DC Converters



**Flyback**

**Characteristics**

- Optimized for different input and output parameters or adjustable (WE-FLEX)
- Isolation voltage: up to 2 kVrms
- With or without airgap for flyback or forward topology
- Output power up to 70 W

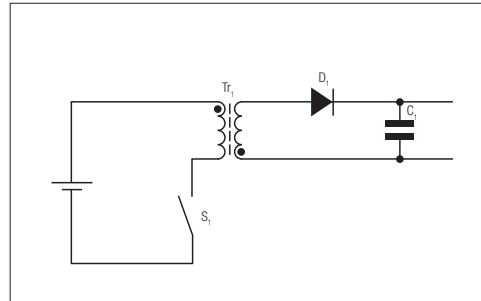


**Forward**

**Application**

- PoE powered devices
- 24V Rail input converters
- Isolated power supplies
- Power supply for gate drive transformers

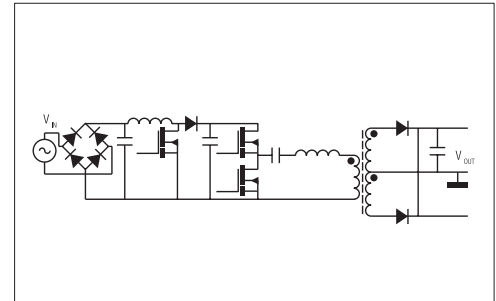
## Transformers for AC/DC Converters



### Flyback

#### Characteristics

- Output powers: up to 250 W
- Optimized winding strategy
- Re-inforced isolation



### LLC

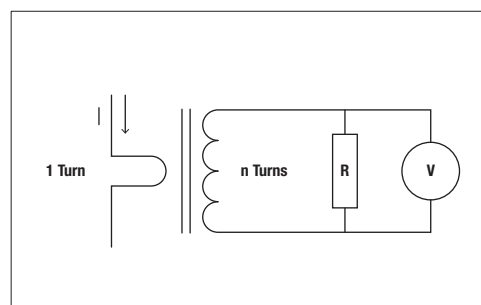
#### Application

- Flyback power supplies for small and medium power range
- Resonant power supplies for medium power range power



Off-the-shelf AC/DC transformer  
in REDEXPERT:  
[www.we-online.com/re-acdc](http://www.we-online.com/re-acdc)

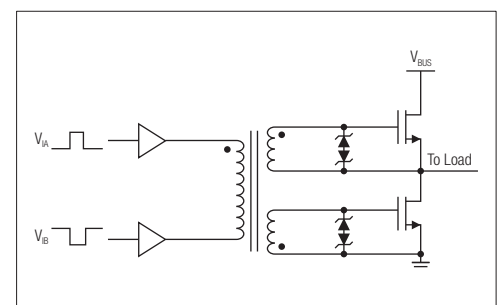
## Auxilliary Transformers



Current Sense

#### Current Sense Applications:

- AC current detection
- Switchmode power supplies
- Overload sensing
- Load drop/shutdown detection
- Metering
- Load measurements
- High frequency current sensing



Gate drive

#### Gate Drive Applications:

- Suitable for power and signal applications
- Designed for high efficient SMPS gate drive applications
- Synchronous Flyback control loop