

# APPLICATION NOTE



## Inductor Current Rating

ANP019 BY STEFAN KLEIN

### 1. How rated current is shown in a better light

Coils are used in switching controllers as power coils. Parameters such as inductance, rated, saturated current and  $R_{DC}$ , are determined and declared by the coil manufacturers in the datasheet specifications. In practice, coils of identical construction are compared in order to make a selection for a switching controller. But then the question arises for the developer, why the rated current can differ between coils of the same construction from different manufacturers.

### 2. The influence of the rated current on the operating temperature

The permissible operating temperature of a component plays an important role. If it is exceeded, then there is the risk of the component being destroyed or its lifespan considerably reduced. The operating temperature " $T_{Op}$ " is made up of two elements. The ambient temperature " $T_{Amb}$ " and the component's self-heating " $\Delta T$ ":

$$T_{Op} = T_{Amb} + \Delta T$$

The self-heating results from the power losses " $P_{Loss}$ " in relation to the component's ability to dissipate heat. The heat dissipation capacity is a product of the component surface area " $A_{Comp}$ " and a product-dependent constant " $k_{Comp}$ ", which reflects the surface material, among other things.

$$\Delta T = \left( \frac{P_{Loss}}{A_{Comp} \cdot k_{Comp}} \right)^{0.833}$$

The reason for self-heating of the coil is the ohmic loss caused by the  $R_{DC}$  of the wire. This is determined in operation.  $R_{DC}$  is measured in a four-pole method with an LCR meter and may vary considerably between components. For a given material constant " $\rho$ " the resistance of a copper wire " $R_{DC}$ " is higher in relationship to its length " $l$ " and smaller cross-sectional area " $A$ ":

$$R_{DC} = \rho \cdot \frac{l}{A}$$

In order to avoid any damage to the coil, consider not exceeding the specified rated current. The rated current " $I_R$ ", is a result of the resistance " $R_{DC}$ " of the wire winding, leads to the power loss " $P_{DCLoss}$ ".

$$P_{DCLoss} = I^2 \cdot R_{DC}$$

# APPLICATION NOTE

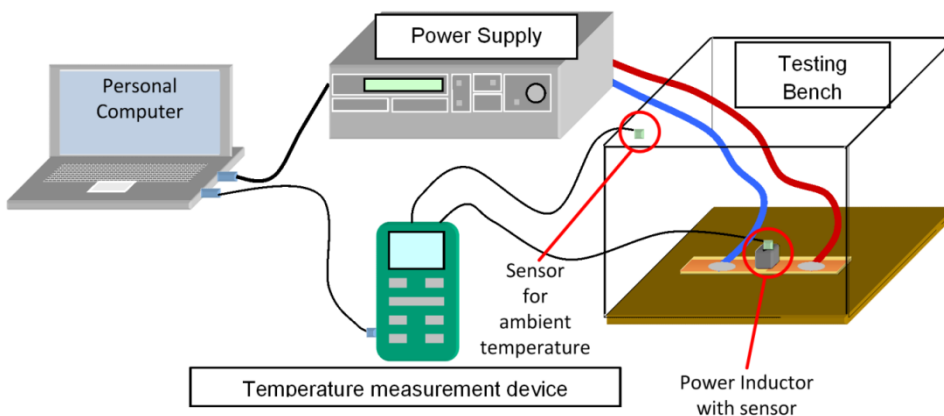


## Inductor Current Rating

The DC power loss of the coil increases with the square of the current through the component and this leads to unwanted heating. Usually the self-heating of the component is included in the component's datasheet. The rated current is specified for a defined self-heating. For passive components this is generally a self-heating of 40 Kelvin, i.e. if the specified rated current flows through the coil, the coil heats up by 40 Kelvin. Deviations appear from manufacturer to manufacturer, because there is no worldwide standard that defines a temperature increase at which the rated current is determined.

### 3. Measurement set-up to determine the rated current

A defined test chamber is necessary, such that the measurement result is not falsified by air convection. The test chamber at Würth Elektronik eiSos, as shown in Figure 1, is along the lines of EN60512-5-2 and is made of a non heat reflecting material. EN60512 describes testing of connectors for electronic equipment. It is used as a reference, as no such definition exists for coils. A thermoelement contacts the surface of the coil using thermal paste, which enables very precise measurement of the component temperature. The measurement system is automated and the current source is controlled by software developed especially for this purpose.



**Figure 1: Measurement set-up to determine the rated current**

The rated current is determined by passing a DC current through the coil. Once the system of coil and measuring equipment has stabilised, both the temperature increase of the components, as well as the ambient temperature, are measured using sensors. If the temperature increase is less than 40 K, the current passed is increased stepwise until heating of 40 K is attained. Once the self-heating of 40 K is attained, the current passed through the coil is read off and declared as the rated current.

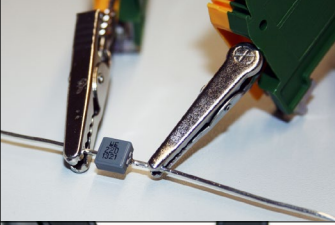
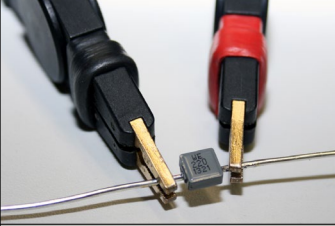
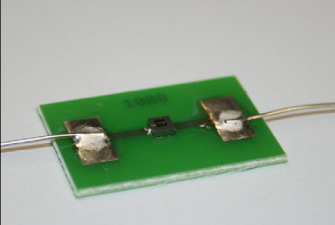
# APPLICATION NOTE



## Inductor Current Rating

### 4. Influences on the measurement

Even within the test chamber there are influences that can significantly falsify the measurement result. During measurement, the coil's connection to the current source is critical, as unwanted heat dissipation produces falsification of the measurement results. For this reason, care is taken at Würth Elektronik eiSos that the component's heat coupling to the environment during measurement is as low as possible. Figure 2 shows a reference measurement with various contacting options for a coil.

Contacting The Inductor	$\Delta T @ 9 A$
<ul style="list-style-type: none"> <li>- WE-LHMI 7030</li> <li>- 74437346220</li> <li>- inductor on wires</li> <li>- huge clamps</li> </ul> 	30,9 K
<ul style="list-style-type: none"> <li>- WE-LHMI 7030</li> <li>- 74437346220</li> <li>- inductor on wires</li> <li>- small clamps</li> </ul> 	35,8 K
<ul style="list-style-type: none"> <li>- WE-LHMI 7030</li> <li>- 74437346220</li> <li>- inductor on PCB</li> <li>- recommended pad design</li> </ul> 	40,0 K

**Figure 2: Comparison of contacting options**

For this reference measurement the Würth Elektronik eiSos WE-LHMI series coil [744 373 460 082](#) in the 7030 package is used and a current of 9 A is passed. The type of contacting significantly influences the measurement result. The greater the mass of the contacts, the more heat can be dissipated from the contacts and the lower the relative temperature change of the coil. The first example from the reference measurement shows, for example, that a WE-LHMI with 7030 package only heats up by 30.9 K if the coil is connected by soldering the wires and is contacted via large clamps. With smaller clamps at the same current, the temperature rises by 35.8 K. This type of contacting is not practical, however. In its datasheets, Würth Elektronik eiSos recommends a pad design for each coil, which serves as the basis for such measurements. In order to reflect the standard during measurement, FR4 of 1.5 mm thickness is used as the substrate material and 35  $\mu\text{m}$  copper, chemically gold plated. The rated current is measured using the four-pole method so the resistance of the connection to the power supply is kept as low as possible. This also avoids high heating of the measurement cables.

# APPLICATION NOTE



## Inductor Current Rating

Figure 2 shows the third contacting option as a circuit board, which is used as an example with the coil from the [WE-LHMI](#) product family and 7030 package. At a current of 9 A the coil heats up by 40 K. This reference measurement shows that the temperature difference can be up to 9.1 K. Generally, many coil manufacturers make no statements about the contacting method, so their measurement method cannot be reproduced. However, if two coils of identical construction from different manufacturers are measured with the same measurement and contacting method, the same results should be obtained.

### 5. Comparison of coils

In the following, a Würth Elektronik eiSos coil from the WE-LHMI product family is compared with an coil of similar construction from a competitor. Both coils are made of round wire and are pressed in a core made of an iron powder mixture. The properties are compared in the table.

Ref. no.	Package type	Inductance L	Rated current I <sub>R</sub>	Direct current resistance R <sub>DC Typ</sub>
<a href="#">744 373 460 082</a>	7030	0.82 µH	<b>9 A</b>	6.7 mΩ
Competitor	7030	0.82 µH	<b>13 A</b>	6.7 mΩ

Table with parameters of both coils in comparison

Interestingly, the rated current differs by 4 A between the two coils. Theoretically, there can be no difference given the same package and same R<sub>DC</sub>. As an experiment, the rated current of both coils was measured and compared using the Würth Elektronik eiSos measurement set-up. For both measurements, the same measurement set-up, the same contacting method and the same measurement board were used. Figure 3 shows the characteristic curve of the reference coil (in blue) is almost identical to the characteristic curve of the WE-LHMI [744 373 460 082](#) (red dashed line).

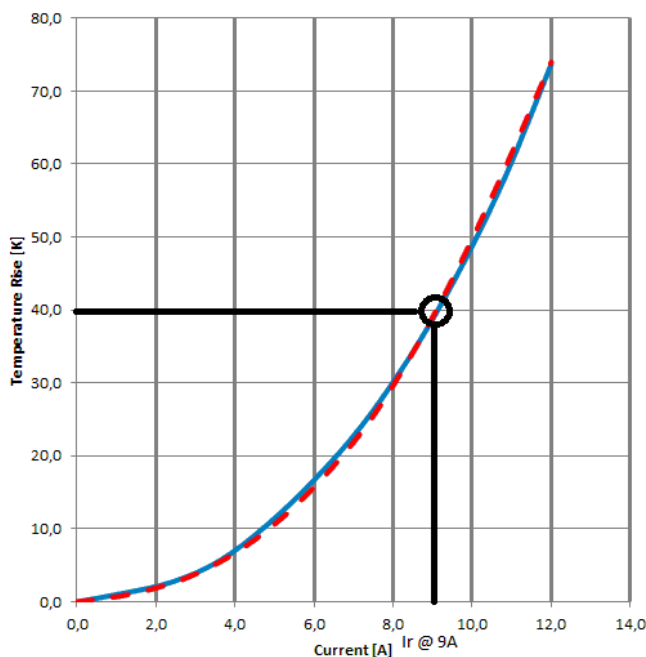


Figure 3: Characteristic curves of the rated currents of both coils

## APPLICATION NOTE



### Inductor Current Rating

Figure 4 shows the temperature of both coils measured with a thermal imaging camera. The temperature of the left coil, WE-LHMI, at a rated current of 9 A minus the room temperature is 40.1 C. Higher rated currents can be achieved with Würth Elektronik eiSos coils from the [WE-MAPI](#) product family.

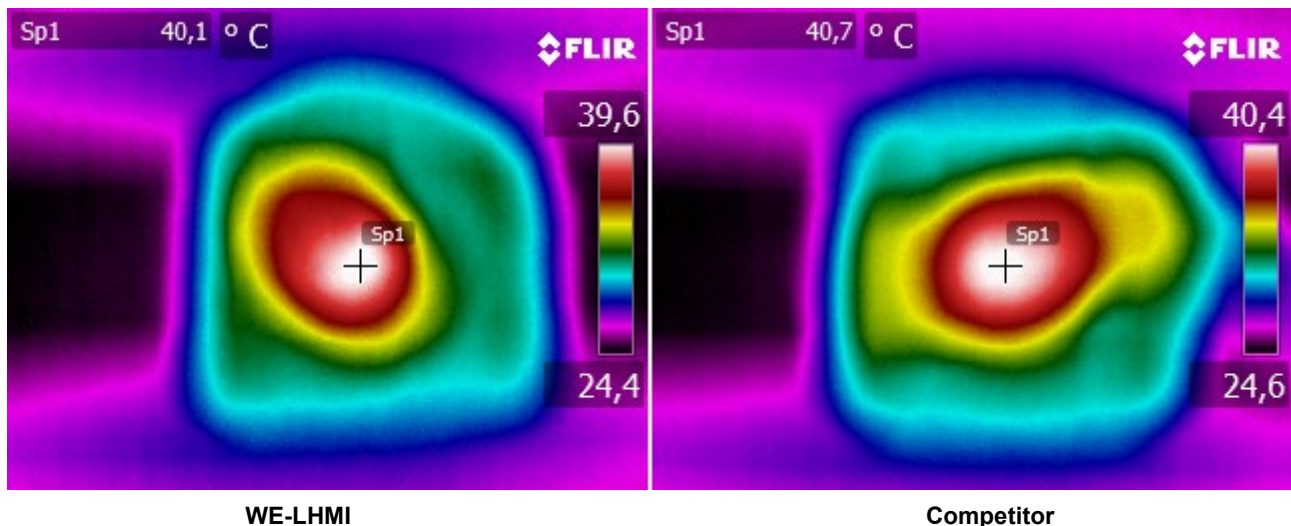


Figure 4: Thermal images of both coils

On the right of Figure 4 the temperature of the other coil at the same rated current minus the room temperature is shown. It is 40.7 C°. The difference between the two temperature measurements is just 0.6 K and is attributed to component tolerances. Both characteristic curves show self-heating of 40 K at a rated current of 9 A. In addition, the two coils of the same package type have the same resistance value of 6.7 mΩ. As a result, both coils have the same power loss "P<sub>DCLoss</sub>":

$$P_{DCLoss} = I^2 \cdot R_{DC}$$

$$P_{DCLoss} = (9 \text{ A})^2 \cdot 6.7 \text{ m}\Omega = 0.5427 \text{ W}$$

This fact implies that the rated current of the other component is determined with a measurement method with which there must be a high level of heat dissipation. The low deviations in the characteristic curve are caused by component tolerances. They occur even when comparing coils of the same construction originating from the same series from the same manufacturer.

## 6. Interpretation of results

The investigation of the rated current by measurement reveals that the rated current is dependent on external influences during the measurement. High heat removal can falsify the measurement result and lead to inexplicably high rated currents. If coils from Würth Elektronik eiSos are compared with other coils, attention should be placed on the package design and where R<sub>DC</sub> is identical. Assumption is that the rated current is determined at the same self-heating. If the package design and R<sub>DC</sub> are the same, the rated current of both coils is the same.

# APPLICATION NOTE

## Coil Current Rating



### IMPORTANT NOTICE

The Application Note is based on our knowledge and experience of typical requirements concerning these areas. It serves as general guidance and should not be construed as a commitment for the suitability for customer applications by Würth Elektronik eiSos GmbH & Co. KG. The information in the Application Note is subject to change without notice. This document and parts thereof must not be reproduced or copied without written permission, and contents thereof must not be imparted to a third party nor be used for any unauthorized purpose.

Würth Elektronik eiSos GmbH & Co. KG and its subsidiaries and affiliates (WE) are not liable for application assistance of any kind. Customers may use WE's assistance and product recommendations for their applications and design. The responsibility for the applicability and use of WE Products in a particular customer design is always solely within the authority of the customer. Due to this fact it is up to the customer to evaluate and investigate, where appropriate, and decide whether the device with the specific product characteristics described in the product specification is valid and suitable for the respective customer application or not.

The technical specifications are stated in the current data sheet of the products. Therefore the customers shall use the data sheets and are cautioned to verify that data sheets are current. The current data sheets can be downloaded at [www.we-online.com](http://www.we-online.com). Customers shall strictly observe any product-specific notes, cautions and warnings. WE reserves the right to make corrections, modifications, enhancements, improvements, and other changes to its products and services.

WE DOES NOT WARRANT OR REPRESENT THAT ANY LICENSE, EITHER EXPRESS OR IMPLIED, IS GRANTED UNDER ANY PATENT RIGHT, COPYRIGHT, MASK WORK RIGHT, OR OTHER INTELLECTUAL PROPERTY RIGHT RELATING TO ANY COMBINATION, MACHINE, OR PROCESS IN WHICH WE PRODUCTS OR SERVICES ARE USED. INFORMATION PUBLISHED BY WE REGARDING THIRD-PARTY PRODUCTS OR SERVICES DOES NOT CONSTITUTE A LICENSE FROM WE TO USE SUCH PRODUCTS OR SERVICES OR A WARRANTY OR ENDORSEMENT THEREOF.

WE products are not authorized for use in safety-critical applications, or where a failure of the product is reasonably expected to cause severe personal injury or death. Moreover, WE products are neither designed nor intended for use in areas such as military, aerospace, aviation, nuclear control, submarine, transportation (automotive control, train control, ship control), transportation signal, disaster prevention, medical, public information network etc. Customers shall inform WE about the intent of such usage before design-in stage. In certain customer applications requiring a very high level of safety and in which the malfunction or failure of an electronic component could endanger human life or health, customers must ensure that they have all necessary expertise in the safety and regulatory ramifications of their applications. Customers acknowledge and agree that they are solely responsible for all legal, regulatory and safety-related requirements concerning their products and any use of WE products in such safety-critical applications, notwithstanding any applications-related information or support that may be provided by WE. CUSTOMERS SHALL INDEMNIFY WE AGAINST ANY DAMAGES ARISING OUT OF THE USE OF WE PRODUCTS IN SUCH SAFETY-CRITICAL APPLICATIONS.

### USEFUL LINKS

Application Notes:

<http://www.we-online.com/app-notes>

REDEXPERT Design Tool:

<http://www.we-online.com/redexpert>

Toolbox:

<http://www.we-online.com/toolbox>

Product Catalog:

<http://katalog.we-online.de/en/>

### CONTACT INFORMATION

Würth Elektronik eiSos GmbH & Co. KG

Max-Eyth-Str. 1, 74638 Waldenburg, Germany

Tel.: +49 (0) 7942 / 945 – 0

Email: [appnotes@we-online.de](mailto:appnotes@we-online.de)

Web: <http://www.we-online.com>