

# APPLICATION NOTE



## Loss-Free Filtered

ANP009D BY RANJITH BRAMANPALLI

### 1. Requirements for an output filter

Switching controllers exhibit a residual ripple in their output voltage, which disturbs electronic devices and may cause electromagnetic interference. Output filters are therefore often used for interference suppression, which may, under certain circumstances, exert an influence on the control loop. Compensation of the control loop may be required to prevent losses in output power. Irrespective of which switching controller topology is in use, the output current causes unwanted residual ripple through the parasitic series resistance ESR and the parasitic inductance ESL of the output capacitor. A relatively large residual ripple arises which depends on the capacitor type selected and has different waveforms. For example, a common electrolytic capacitor causes a ripple voltage of up to several hundred millivolts depending on the output voltage of the switching controller. Selecting a ceramic capacitor, the remaining ripple voltage may only be a few tenths of a millivolt. High residual ripple is undesirable and can disturb the electronic device. Special analog and HF circuits require a stable, smoothed and clean supply voltage. However, the high frequency component of harmonic oscillations on the output voltage cannot be overlooked, as this may lead to increased electromagnetic interference emission. Here the output filter can reduce the residual ripple and filter out high frequency components.

### 2. Reduction of residual ripple

In practice, the decision is usually made for a LC low-pass filter in order to reduce the residual ripple to a few millivolts and to suppress high frequency components. Figure 1 shows such a low-pass filter, which can, for instance, be realized with an unshielded coil, a WE-PD2 and a conventional electrolytic capacitor.

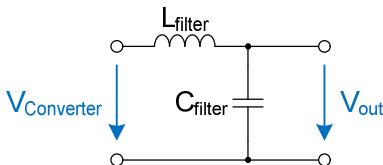


Figure 1: Simple low-pass filter

If a particularly clean output voltage is required, the LC low-pass filter is extended with a second stage low-pass filter consisting of a ferrite and a capacitor. Figure 2 shows this type of two-stage output filter, which can be realized inexpensively, for example with a WE-PD2 coil and a WE-MPSB SMD ferrite.

# APPLICATION NOTE



## Loss-Free Filtered

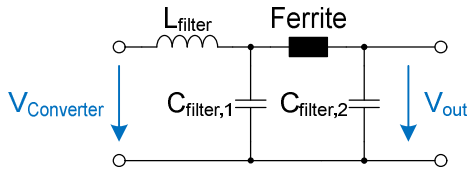


Figure 2: Two-stage output filter

" $L_{filter}$ " and " $C_{filter,1}$ " act as a low-pass filter, which filters out the clock frequency of the switching controller and attenuates its harmonic oscillations. Further high frequency components of the switching controller output voltage are converted into heat by the SMD ferrite and together with " $C_{filter,2}$ " their amplitude is attenuated. An output filter of this type reduces the residual ripple to a few millivolts and even allows sensitive analog circuits to be supplied.

### 3. Direct current losses at the output filter

Above a certain switching controller output power, the output filter causes large direct current losses of the output power and thus a reduction in the efficiency of the switching controller. The direct current resistance RDC of the coils and ferrites now generates a significant voltage drop across the output filter and therefore causes a reduction in the resulting output voltage. Figure 3 shows this effect.

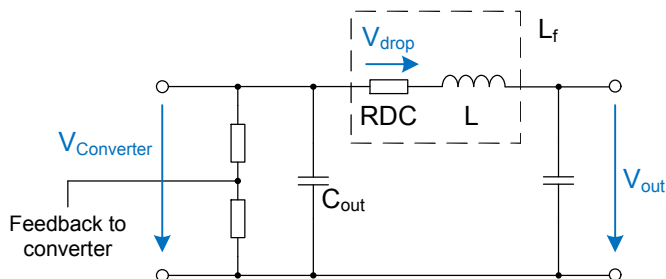


Figure 3: Voltage drop at the filter coil

According to the dependence of the size of the coil, the RDC may be between a few milliohms and several ohms and is therefore not negligible for high output currents. Even an SMD high current ferrite can have an RDC of up to  $0.04 \Omega$ . To determine the actual voltage, for switching controllers the output voltage is tapped from a voltage divider and is passed to the feedback connection of the switching controller IC. To reduce output voltage losses due to an output filter, there is the option of implementing the output filter in the control loop by determining the actual value after the output filter. Figure 4 shows the schematic arrangement of this method.

# APPLICATION NOTE



## Loss-Free Filtered

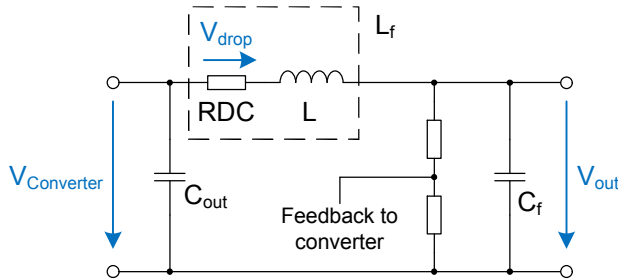


Figure 4: Implementation of the output filter in the control circuit

## 4. Stability of the control circuit

However, the filter coil, ferrite and the filter capacitors cause an unwanted phase shift, which disturbs the stability of the control loop. This unwanted phase shift gives rise to a reduction in the amplitude and phase margin. In extreme cases, it leads to instability and the output voltage tends to oscillate. In order to ensure stability, an amplitude margin of  $> 12$  dB and a phase margin of  $> 45^\circ$  is necessary in practice, such that the converter does not oscillate on excitation. The control circuit is considered dynamically stable if the loop gain drops to 0 dB before the associated phase shift has attained a value of  $-180^\circ$ . Here the amplitude response of the loop gain should cross the x-axis, i.e. at 0 dB with 20 dB / decade. Figure 5 shows a Bode plot of a stable-regulated step-down (buck) converter. This example shows an amplitude margin of 32 dB and a phase margin of  $56^\circ$ .

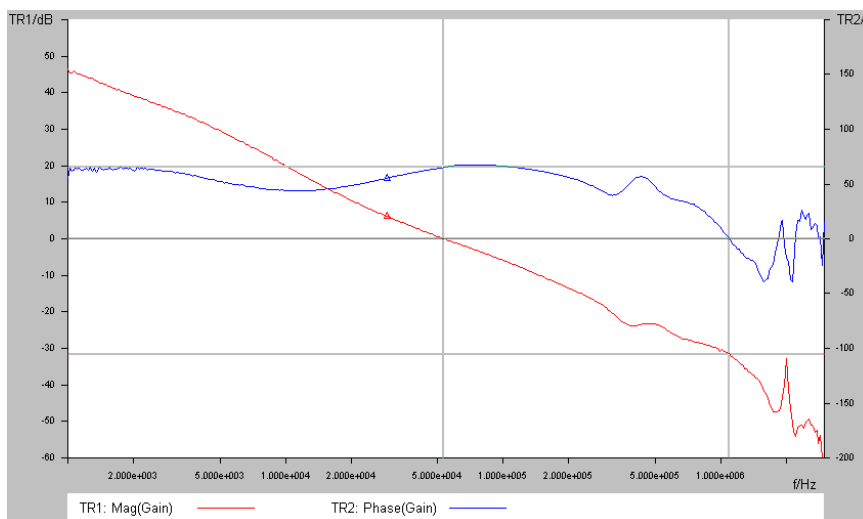


Figure 5: Bode plot of a stable-regulated switching controller

If the stability criteria of a switching controller are not met with an output filter, compensation of the control loop is required to ensure a stable output voltage. The stability of the control section thus exerts an influence on the stability of the output voltage.

## APPLICATION NOTE



### Loss-Free Filtered

## 5. Transient response

In the event of a voltage fluctuation at the input of the switching controller, the output voltage should remain stable. Analogously, in case of a sudden drop or rise of the output current, the output voltage should readjust quickly. This is what transient response means. Figure 6 shows the transient response of a stable-regulated switching controller (yellow curve) with an output voltage of 5 V and a sudden change in load from 0 A to 1 A (green curve).

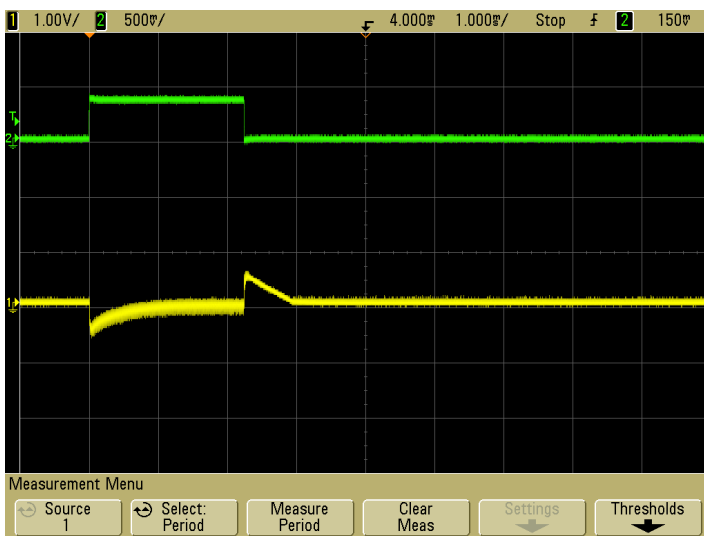


Figure 6: Transient response of a stable-regulated switching controller

A sudden change in load should lead to a rapid step response of the control circuit, which promptly regulates the output voltage to its target value. The step response should not cause too great an amplitude in the output voltage, as otherwise electronic circuits could be destroyed by overvoltage. Ideally, the output voltage should be promptly regulated to the target value following the step response, without generating an overshoot or even ringing. Ringing during the compensation phase would therefore be attributable to instability of the switching controller. If there is a fast step response and a timely compensation phase, the switching controller may be considered to be stable-regulated.

## 6. Summary

If the output filter is implemented in the control section, the control section is second order. The switching controller must therefore be operated with a higher integration component, which attenuates the control section and hence slows it down. Complicated compensation of the control section is now required. The method of implementing the output filter in the control section is therefore not recommended. The switching controller output voltage should be tapped directly at the switching controller output capacitor, i.e. prior to an output filter. It is recommended to select filter coils and ferrites with the lowest possible  $R_{DC}$  in order to reduce DC losses in the output filter.

# APPLICATION NOTE



## Loss-Free Filtered

### IMPORTANT NOTICE

The Application Note is based on our knowledge and experience of typical requirements concerning these areas. It serves as general guidance and should not be construed as a commitment for the suitability for customer applications by Würth Elektronik eiSos GmbH & Co. KG. The information in the Application Note is subject to change without notice. This document and parts thereof must not be reproduced or copied without written permission, and contents thereof must not be imparted to a third party nor be used for any unauthorized purpose.

Würth Elektronik eiSos GmbH & Co. KG and its subsidiaries and affiliates (WE) are not liable for application assistance of any kind. Customers may use WE's assistance and product recommendations for their applications and design. The responsibility for the applicability and use of WE Products in a particular customer design is always solely within the authority of the customer. Due to this fact it is up to the customer to evaluate and investigate, where appropriate, and decide whether the device with the specific product characteristics described in the product specification is valid and suitable for the respective customer application or not.

The technical specifications are stated in the current data sheet of the products. Therefore the customers shall use the data sheets and are cautioned to verify that data sheets are current. The current data sheets can be downloaded at [www.we-online.com](http://www.we-online.com). Customers shall strictly observe any product-specific notes, cautions and warnings. WE reserves the right to make corrections, modifications, enhancements, improvements, and other changes to its products and services.

WE DOES NOT WARRANT OR REPRESENT THAT ANY LICENSE, EITHER EXPRESS OR IMPLIED, IS GRANTED UNDER ANY PATENT RIGHT, COPYRIGHT, MASK WORK RIGHT, OR OTHER INTELLECTUAL PROPERTY RIGHT RELATING TO ANY COMBINATION, MACHINE, OR PROCESS IN WHICH WE PRODUCTS OR SERVICES ARE USED. INFORMATION PUBLISHED BY WE REGARDING THIRD-PARTY PRODUCTS OR SERVICES DOES NOT CONSTITUTE A LICENSE FROM WE TO USE SUCH PRODUCTS OR SERVICES OR A WARRANTY OR ENDORSEMENT THEREOF.

WE products are not authorized for use in safety-critical applications, or where a failure of the product is reasonably expected to cause severe personal injury or death. Moreover, WE products are neither designed nor intended for use in areas such as military, aerospace, aviation, nuclear control, submarine, transportation (automotive control, train control, ship control), transportation signal, disaster prevention, medical, public information network etc. Customers shall inform WE about the intent of such usage before design-in stage. In certain customer applications requiring a very high level of safety and in which the malfunction or failure of an electronic component could endanger human life or health, customers must ensure that they have all necessary expertise in the safety and regulatory ramifications of their applications. Customers acknowledge and agree that they are solely responsible for all legal, regulatory and safety-related requirements concerning their products and any use of WE products in such safety-critical applications, notwithstanding any applications-related information or support that may be provided by WE. CUSTOMERS SHALL INDEMNIFY WE AGAINST ANY DAMAGES ARISING OUT OF THE USE OF WE PRODUCTS IN SUCH SAFETY-CRITICAL APPLICATIONS.

### USEFUL LINKS

Application Notes:

<http://www.we-online.com/app-notes>

**REDEXPERT** Design Tool:

<http://www.we-online.com/redexpert>

Toolbox:

<http://www.we-online.com/toolbox>

Product Catalog:

<http://katalog.we-online.de/en/>

### CONTACT INFORMATION

Würth Elektronik eiSos GmbH & Co. KG

Max-Eyth-Str. 1, 74638 Waldenburg, Germany

Tel.: +49 (0) 7942 / 945 – 0

Email: [appnotes@we-online.de](mailto:appnotes@we-online.de)

Web: <http://www.we-online.com>