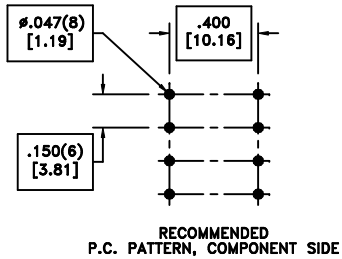
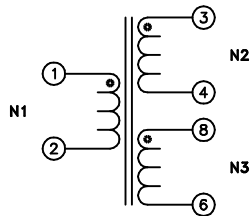
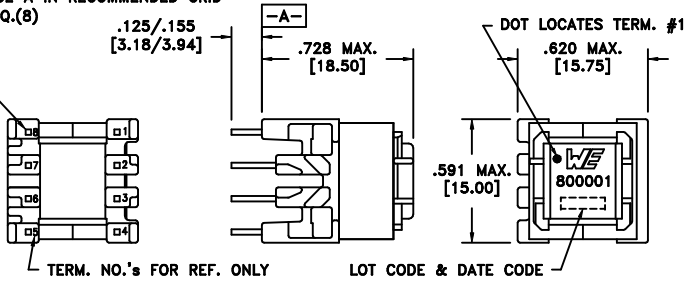


CUSTOMER TERMINAL	RoHS	LEAD(Pb)-FREE
Sn96%, Ag4%	Yes	Yes

more than you expect



PART MUST INSERT FULLY TO SURFACE A IN RECOMMENDED GRID
.024 SQ.(8)
[.60]



ELECTRICAL SPECIFICATIONS @ 25°C unless otherwise noted:

PARAMETER	TEST CONDITIONS	VALUE
D.C. RESISTANCE	1-2 @20°C	0.300 ohms ±10%
D.C. RESISTANCE	3-4 @20°C	0.110 ohms max.
D.C. RESISTANCE	6-8 @20°C	0.110 ohms max.
INDUCTANCE	1-2 100kHz, 100mVAC, Ls	127uH ±10%
INDUCTANCE	3-4 100kHz, 100mVAC, Ls	4.12uH ±10%
INDUCTANCE	6-8 100kHz, 100mVAC, Ls	4.12uH ±10%
SATURATION CURRENT	20% rolloff from initial	2.5A
DIELECTRIC	1-3 2000VAC, 1 second	2000VAC, 1 minute
DIELECTRIC	1-8 2000VAC, 1 second	2000VAC, 1 minute
DIELECTRIC	3-8 2000VAC, 1 second	2000VAC, 1 minute
TURNS RATIO	(1-2):(3-4)	6.25:1, ±1%
TURNS RATIO	(1-2):(6-8)	6.25:1, ±1%

Wire insulation & RoHS status not affected by wire color.
Wire insulation color may vary depending on availability.

REV.	DATE	Packaging Specifications Method: Tray PKG-0732 www.we-online.com/midcom		Tolerances unless otherwise specified: Angles: ±1° Decimals: ±.005 [.13] Fractions: ±1/64 Footprint: ±.001 [.03]	DRAWING TITLE TRANSFORMER	PART NO. 760800001
6A	5/11	SEE REVISION SHEET FOR REVISION LEVEL	CONVENTION PLACEMENT	This drawing is dual dimensioned. Dimensions in brackets are in millimeters.	eiSos p/n: 760800001	compliant RoHS SPECIFICATION SHEET 1 OF 1