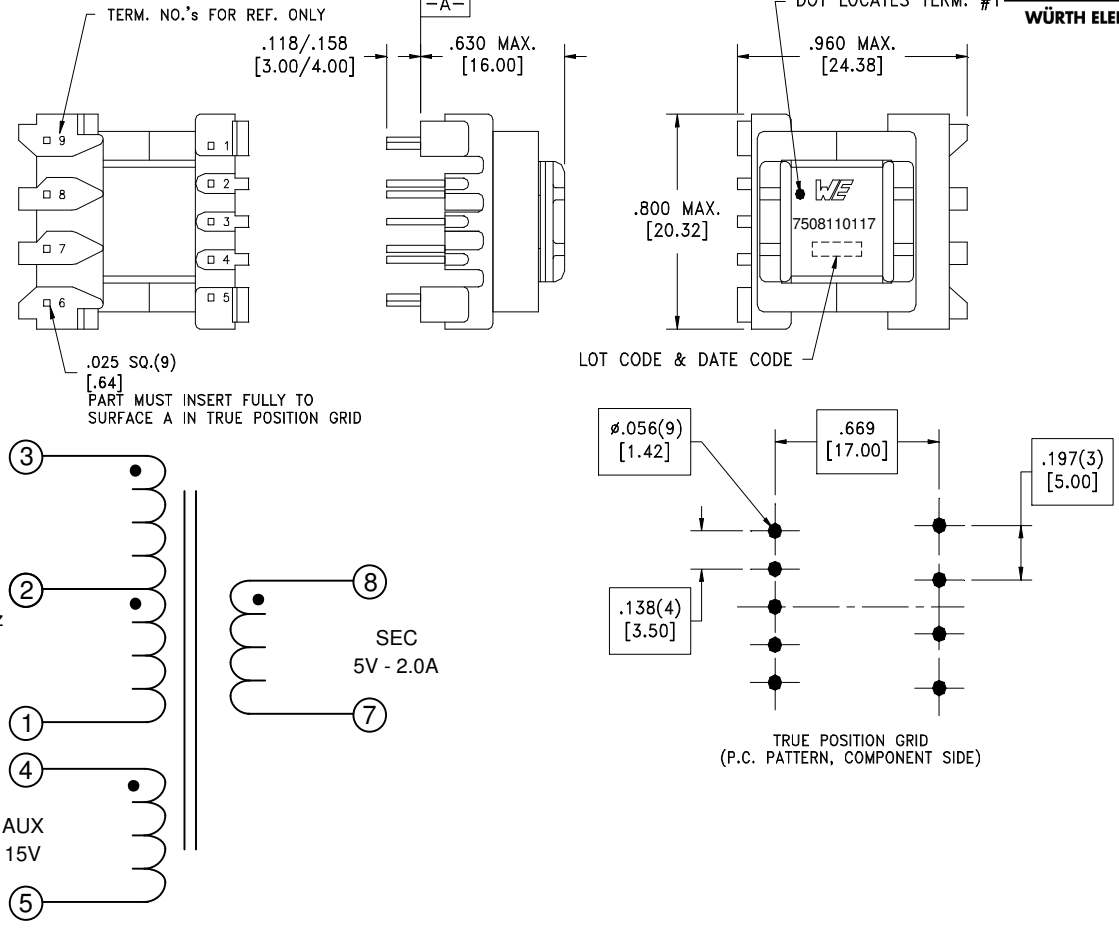


CUSTOMER TERMINAL	RoHS	LEAD(Pb)-FREE
Sn96%, Ag4%	Yes	Yes



ELECTRICAL SPECIFICATIONS @ 25°C unless otherwise noted:

D.C. RESISTANCE (@20°C):	1-3 , 2.40 Ohms ±10%.
	4-5 , 3.60 Ohms ±10%.
	7-8 , 0.065 Ohms max.
DIELECTRIC RATING:	4500VAC, 1 minute tested by applying 4500VAC for 1 second between pins 3-8(tie 1+4).
	1000VAC, 1 minute tested by applying 1250VAC for 1 second between pins 3-4.
INDUCTANCE:	650µH ±10%, 10kHz, 100mVAC, 0mADC, 1-3, Ls.
SATURATION CURRENT:	1.60A saturating current that causes 20% rolloff from initial inductance.
LEAKAGE INDUCTANCE:	20µH typ., 40µH max., 100kHz, 100mVAC, 1-3(tie 4+5,7+8), Ls.
URNS RATIO:	(3-1):(8-7), (4.52):(1.00), ±1%.
	(4-5):(8-7), (3):(1.00), ±1%.
	(3-2):(2-1), (1):(1.00), ±1%.

Designed to comply with the following requirements as defined by IEC61558-2-17:
 - Reinforced insulation for a primary circuit at a working voltage of 400VDC.

OPERATING TEMPERATURE RANGE: -40°C to +125°C including temp. rise.
 Wire insulation & RoHS status not affected by wire color. Wire insulation color may vary depending on availability.

WE-Midcom, Inc. Watertown, SD USA Toll Free: 800-643-2661 Fax: 605-886-4486	Unless otherwise specified, tolerances are as follows: Angles: ±1° Fractions: ±1/64 Decimals: ±.005 (.127mm)		WE-Midcom, Inc.	
	Drawing Title Transformer		Drawing Number 7508110117	Rev. 00
Revisions: See Sheet 1		Scale ----	Sheet 2 of 5	
Engineer:PLP			09/24/2010	

This drawing is dual dimensioned.
 Dimensions in brackets are in millimeters