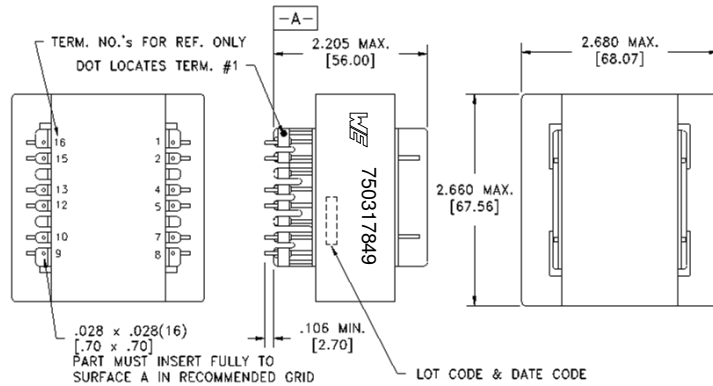


CUSTOMER TERMINAL	RoHS	LEAD(Pb)--FREE
Sn 96%, Ag 4%	Yes	Yes

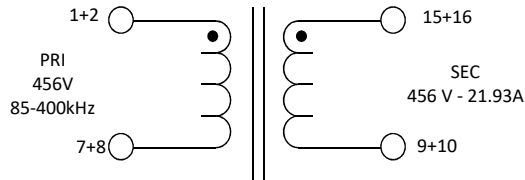
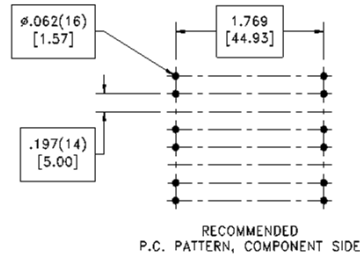
more than you expect



ELECTRICAL SPECIFICATIONS @ 25° C unless otherwise noted:

PARAMETER	TEST CONDITIONS	VALUE
D.C. RESISTANCE	1-8 tie(1+2, 7+8), @20°C	0.012 ohms max.
D.C. RESISTANCE	9-16 tie(9+10, 15+16), @20°C	0.014 ohms max.
INDUCTANCE	1-8 tie(1+2, 7+8), 10kHz, 100mV, Ls	67.00µH ±10%
SATURATION CURRENT	1-8 tie(1+2, 7+8), 20% rolloff from initial	40A
LEAKAGE INDUCTANCE	1-8 tie(1+2, 7+8, 9+10+15+16), 100kHz, 100mV, Ls	2µH typ.
DIELECTRIC	1-16 tie(1+2, 15+16), 2500VAC, 1 second	2000VAC, 1 minute
TURNS RATIO	(1-8):(16-9), tie(1+2, 7+8, 9+10, 15+16)	1:1, ±1%

Need to verify terminal length with bobbin print. SP 9/12/18



GENERAL SPECIFICATIONS:

OPERATING TEMPERATURE RANGE: -40°C to +125°C including temp rise.

Safety standard undefined

Application of the transformer allows for the leadwires between terminals 1&2, 7&8, 9&10 and 15&16 to solder bridge.

Customer to tie terminals 1+2, 7+8, 9+10 and 15+16 on PC board.

Wire insulation & RoHS status not affected by wire color. Wire insulation color may vary depending on availability.

DFM	Packaging Specifications		Tolerances unless otherwise specified: Angles: ±1° Decimals: ±.005 [.13] Fractions: ±1/64 Footprint: ± .001 [.03]	DRAWING TITLE TRANSFORMER	PART NO. 750317849
DATE	Method: Tray PKG-1107		This drawing is dual dimensioned. Dimensions in brackets are in millimeters.		
ENG	CHC				
REV.	01				
DATE	1/10/2020	www.we-online.com/midcom			SPECIFICATION SHEET 1 OF 1