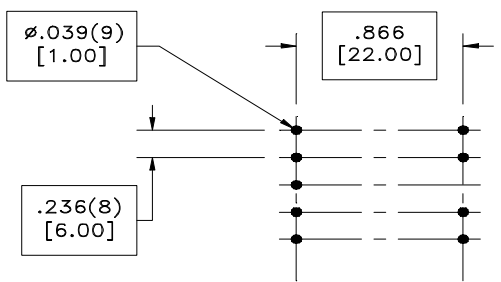
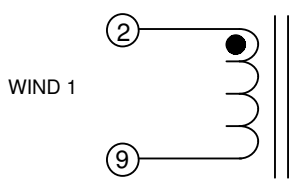
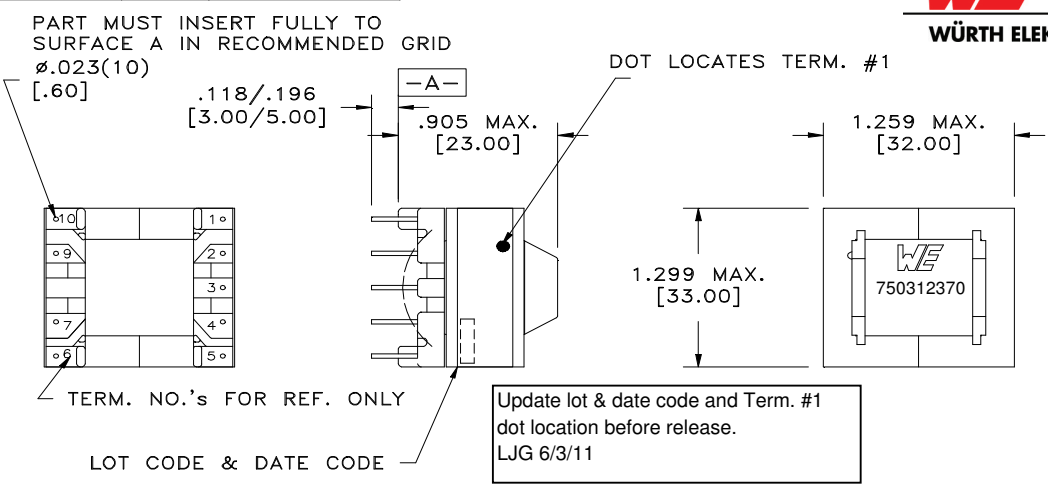


CUSTOMER TERMINAL	RoHS	LEAD(Pb)-FREE
Sn96%, Ag4%	Yes	Yes



RECOMMENDED  
P.C. PATTERN, COMPONENT SIDE

**ELECTRICAL SPECIFICATIONS @ 25°C unless otherwise noted:**

D.C. RESISTANCE (@20°C):	2-9, 0.080 Ohms $\pm 20\%$ .
INDUCTANCE:	281 $\mu$ H $\pm 10\%$ , 10kHz, 100mVAC, 0mADC, 2-9, Ls.
SATURATION CURRENT:	6.3A saturating current that causes 20% rolloff from initial inductance.

OPERATING TEMPERATURE RANGE: -40°C to 125°C including temp. rise.  
Safety Standard Undefined

T\_0\_5543

WE-Midcom, Inc. Watertown, SD USA Toll Free: 800-643-2661 Fax: 605-886-4486	Unless otherwise specified, tolerances are as follows: Angles: $\pm 1^\circ$ Fractions: $\pm 1/64$ Decimals: $\pm .005(.127\text{mm})$		WE-Midcom, Inc.	
	Drawing Title <b>Transformer</b>		Drawing Number <b>750312370</b>	Rev. <b>00</b>
This drawing is dual dimensioned. Dimensions in brackets are in millimeters	Revisions: See Sheet 1		Scale ----	Sheet 2 of 5
Engineer: LJG			06/08/2012	