

CUSTOMER TERMINAL	RoHS	LEAD(Pb)-FREE
Sn96%, Ag4%	Yes	Yes

more than you expect



**ELECTRICAL SPECIFICATIONS @ 25°C unless otherwise noted:**

PARAMETER	TEST CONDITIONS	VALUE
D.C. RESISTANCE	1-3 @20°C	0.180 ohms max.
D.C. RESISTANCE	6-4 @20°C	0.180 ohms max.
6C INDUCTANCE	1-3 100kHz, 10mVAC, Ls	117.0uH ±30%
DIELECTRIC	1-6 6250Vrms, 1 second	5000Vrms, 1 minute
URNS RATIO	(6-4):(1-3)	1.08:1, ±2%

**GENERAL SPECIFICATIONS:**

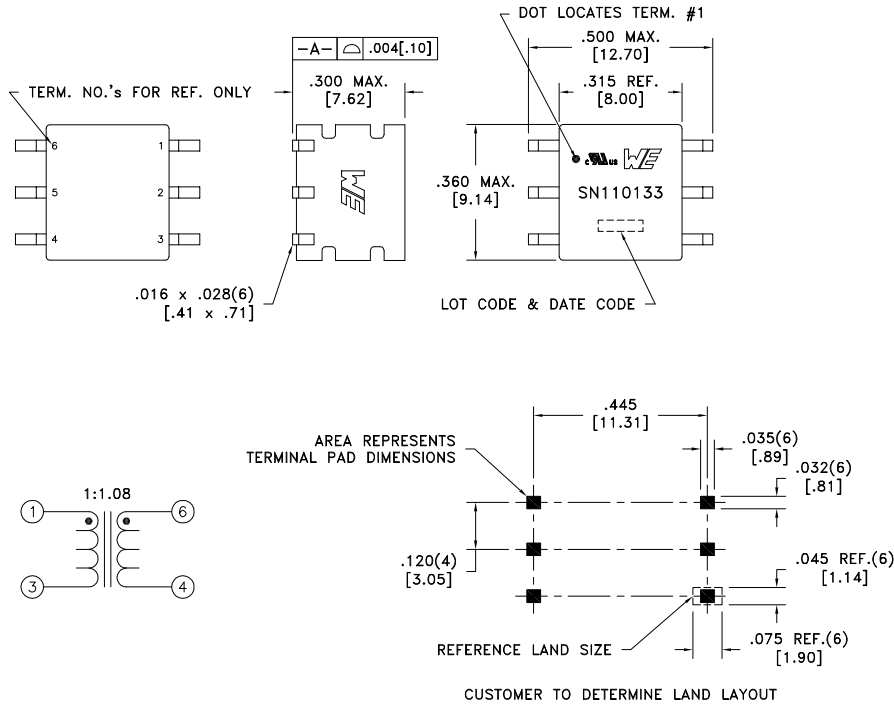
OPERATING TEMPERATURE RANGE: -40°C to +125°C including temp rise.

8mm minimum creepage & clearance distance between PRI & SEC.

Complies with the following requirements as defined by IEC60950-1, EN60950-1, UL60950-1/CSA-60950-1 and AS/NZS60950-1:  
 - Reinforced insulation for a primary circuit at a working voltage of 250VAC, Overvoltage Category II, Pollution Degree 2, up to 2km above sea level.

COPLANARITY: All 6 terminals must lie on a plane within .004 [.10] of Surface A after lead tinning.

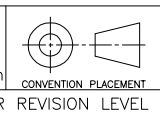
- 6B Complies with the following requirements as defined by IEC60601-1(ed); am1:  
 - Providing two means of Patient Protection up to a working voltage of 250VAC.
- 6B Designed to comply with the following requirements as defined by IEC60664-1:  
 - Reinforced insulation for a primary circuit at a working voltage of 400VAC, up to 2km above sea level.



Wire insulation & RoHS status not affected by wire color.  
 Wire insulation color may vary depending on availability.

AGENCY NUMBER	
UL60950-1	E205930
6B UL CODE FILE#	E205930 SN
6B CSA60950-1 (Via CUL)	E205930

REV.	DATE	Packaging Specifications
6C	2/19	Method: Tape & Reel PKG-0948 www.we-online.com/midcom
6B	5/15	
6A	3/15	SEE REVISION SHEET FOR REVISION LEVEL



Tolerances unless otherwise specified:  
 Angles: ±1° Decimals: ±.005 [.13]  
 Fractions: ±1/64 Footprint: ±.005 [.13]  
 This drawing is dual dimensioned. Dimensions in brackets are in millimeters.

DRAWING TITLE  
**TRANSFORMER**  
 eiSos p/n: 750110133



PART NO.  
**750110133**  
 SPECIFICATION SHEET 1 OF 1