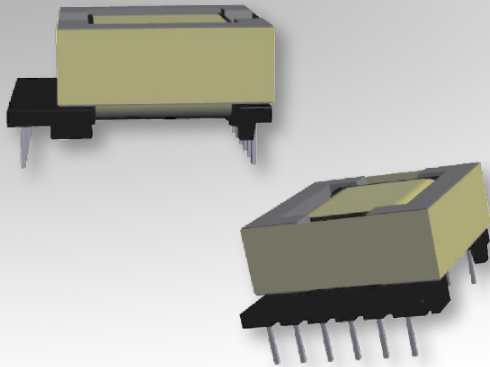


# EFD25

## 12-Terminal EXT, THT, Horizontal



### Characteristics:

This TH EFD25 package was developed for special safety cases and low profile requirements. It features many terminals for multiple outputs, split coils, or parallel high current winds.

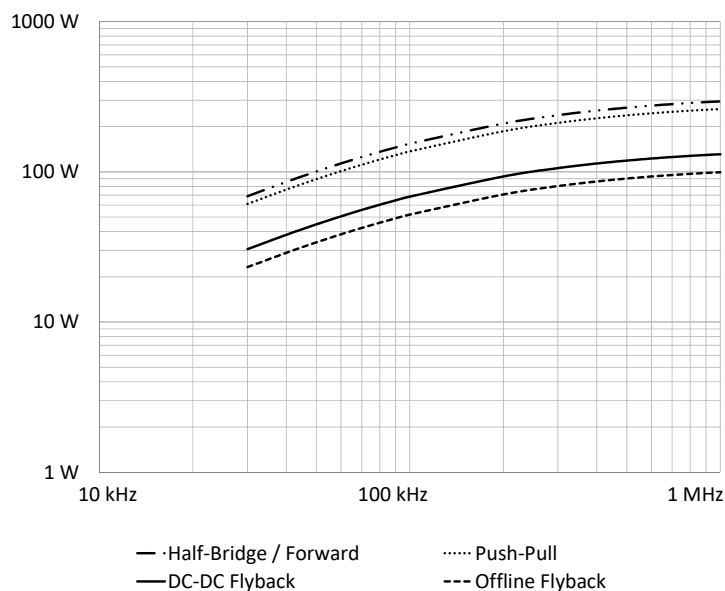
### Applications:

- Offline
- Industrial controls
- Lighting
- Metering
- White goods
- Telecom
- Charging
- Stand-by power

### Technical Data:

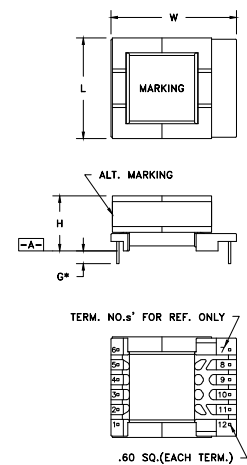
Order Code	Type of Insulation	Winding Width (mm)	Winding Build (mm)	Winding Perimeter (mm)	A <sub>e</sub> (mm <sup>2</sup> )	L <sub>e</sub> (mm)	V <sub>e</sub> (mm <sup>3</sup> )	Core Order Code (Power)
070-7169	Reinforced	16.61	2.5	39.62	58	57	3306	150-2305

Order Code	L (mm)	W (mm)	H (mm)	G (mm)
070-7169	26.3 max.	33 max.	14 max.	4 ±1

**Estimated Maximum Power Level:**

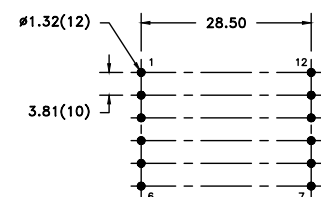
*All curves are DC-DC unless otherwise noted. For offline applications, the power level must be derated as shown in the flyback curves.*

**Dimensions:**



\* DIMENSION MAY BE EXCEEDED WITH SOLDER ONLY  
PART MUST INSERT FULLY TO SURFACE A IN RECOMMENDED GRID

## Footprint (mm):



RECOMMENDED P.C. PATTERN, COMPONENT SIDE  
TOLERANCE:  $\pm .03$