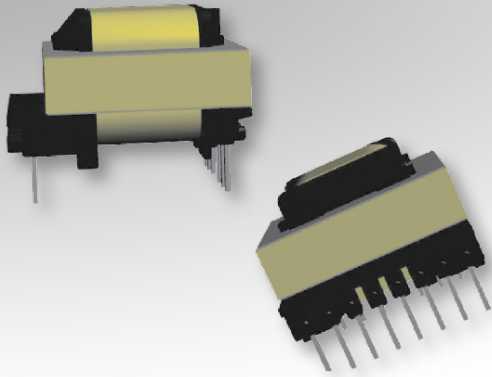


# Bobbin Packages

## EE20/10/6 (EF20)

14-Terminal EXT, THT, Horizontal



### Characteristics:

This TH EE20/10/6 (EF20) package was developed for special safety cases and low cost requirements. It features many terminals for multiple outputs, split coils, or parallel high current winds.

### Applications:

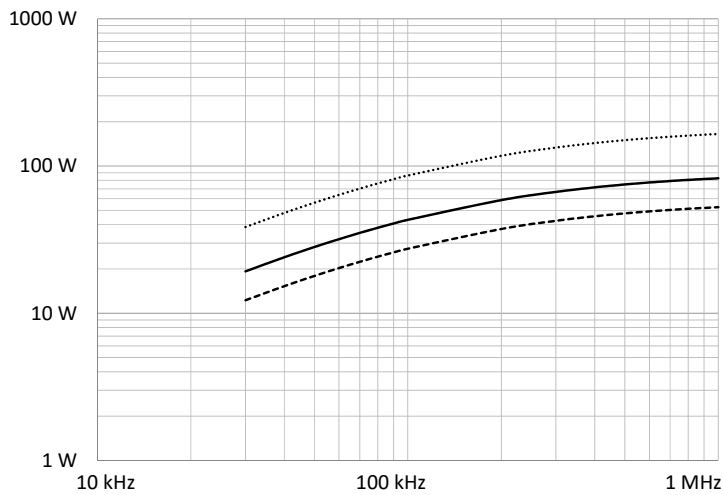
- Offline
- Industrial controls
- Lighting
- Metering
- White goods
- Telecom
- Charging
- Stand-by power

### Technical Data:

Order Code	Type of Insulation	Winding Width (mm)	Winding Build (mm)	Winding Perimeter (mm)	$A_c$ (mm <sup>2</sup> )	$L_e$ (mm)	$V_e$ (mm <sup>3</sup> )	Core Order Code (Power)
070-7080	Reinforced	11	3.1	31.39	32	46	1472	150-1945

Order Code	L (mm)	W (mm)	H (mm)	G (mm)
070-7080	22.2 max.	25 max.	16 max.	3.5 ±0.5

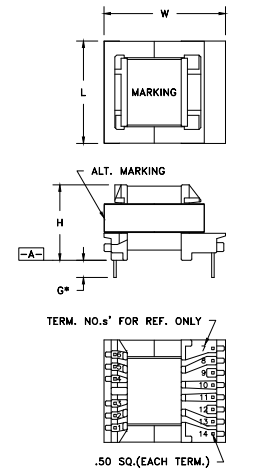
### Estimated Maximum Power Level:



..... Push-Pull    — DC-DC Flyback    --- Offline Flyback

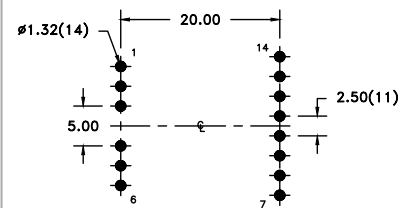
All curves are DC-DC unless otherwise noted. For offline applications, the power level must be derated as shown in the flyback curves.

### Dimensions:



\* DIMENSION MAY BE EXCEEDED WITH SOLDER ONLY PART MUST INSERT FULLY TO SURFACE A IN RECOMMENDED GRID

### Footprint (mm):



RECOMMENDED P.C. PATTERN, COMPONENT SIDE TOLERANCE: ±.03