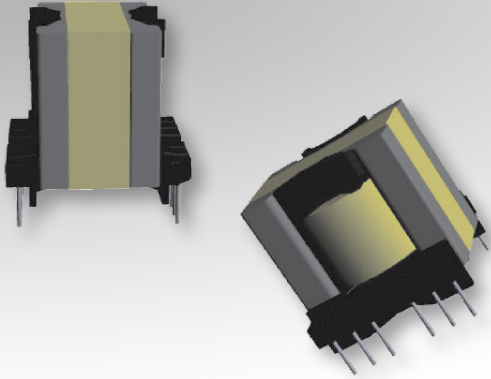


# Bobbin Packages

## PQ2625

12-Terminal, THT, Vertical



### Characteristics:

This TH PQ2625 package was developed for functional insulation cases and compact footprint requirements. It features self-shielding cores for EMI improvement, large core cross-sectional area for high power density, and many terminals for multiple outputs, split coils, or parallel high current winds.

### Applications:

- DC/DC converter
- Industrial controls
- Lighting
- White goods
- Telecom
- PFC

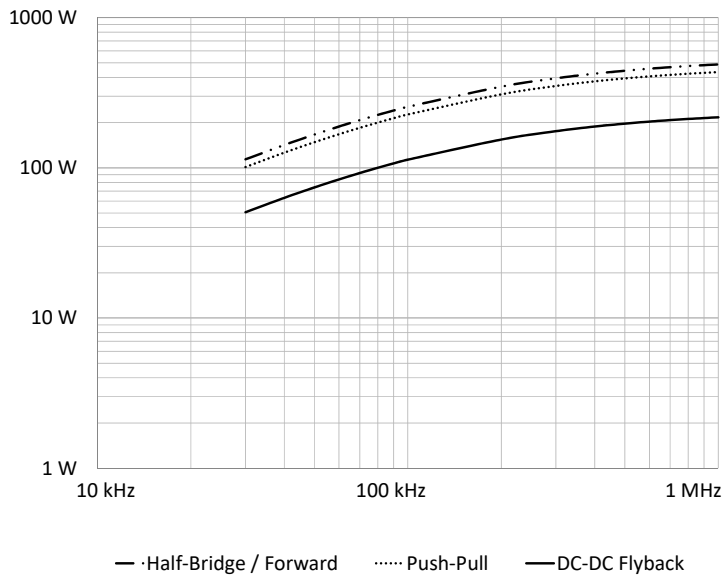
1

### Technical Data:

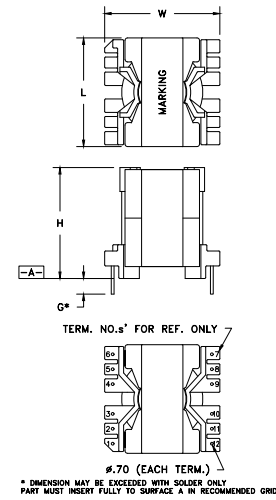
Order Code	Type of Insulation	Winding Width (mm)	Winding Build (mm)	Winding Perimeter (mm)	$A_c$ (mm <sup>2</sup> )	$L_e$ (mm)	$V_e$ (mm <sup>3</sup> )	Core Order Code (Power)
070-7011	Functional	13.59	3.51	45.57	118	55.5	6549	150-2239

Order Code	L (mm)	W (mm)	H (mm)	G (mm)
070-7011	29.2 max.	30.35 max.	29.3 max.	4.07 ±0.32

### Estimated Maximum Power Level:



### Dimensions:



### Footprint (mm):

