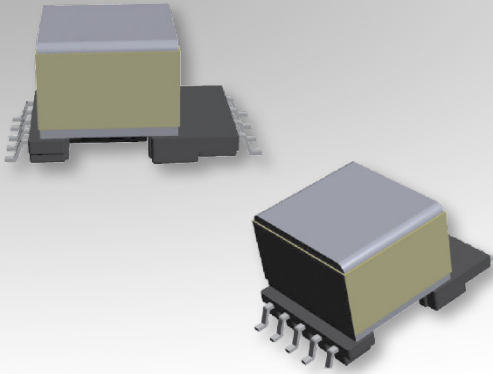


# Bobbin Packages

## EPW15

9-Terminal EXT, SMT, Horizontal



### Characteristics:

This SMT EPW15 package was developed for special safety cases and self-shielding cores for EMI improvement requirements. It features large core cross-sectional area for high power density.

### Applications:

- Offline
- Industrial controls
- Lighting
- Metering
- White goods
- PoE
- Telecom
- Charging
- Stand-by power
- DSL

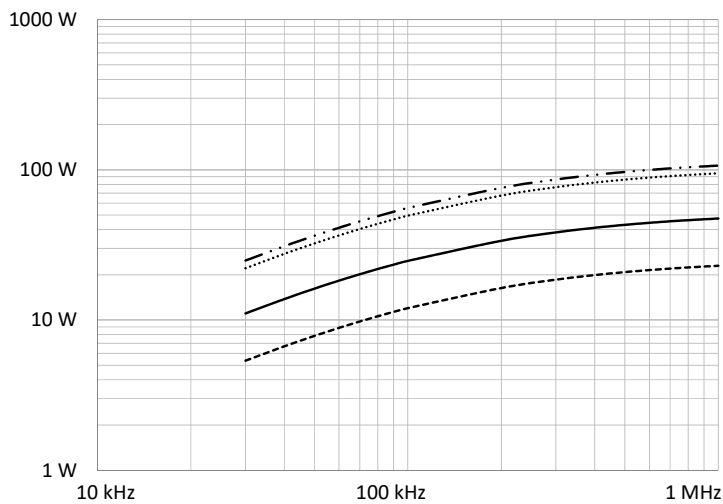
1

### Technical Data:

| Order Code | Type of Insulation | Winding Width (mm) | Winding Build (mm) | Winding Perimeter (mm) | $A_c$ (mm <sup>2</sup> ) | $L_e$ (mm) | $V_e$ (mm <sup>3</sup> ) | Core Order Code (Power) |
|------------|--------------------|--------------------|--------------------|------------------------|--------------------------|------------|--------------------------|-------------------------|
| 070-6386   | Reinforced         | 7.76               | 2.74               | 20.15                  | 26.9                     | 30.6       | 825                      | 150-2874                |

| Order Code | L (mm)    | W (mm)    | H (mm)    |
|------------|-----------|-----------|-----------|
| 070-6386   | 15.8 max. | 26.5 max. | 13.5 max. |

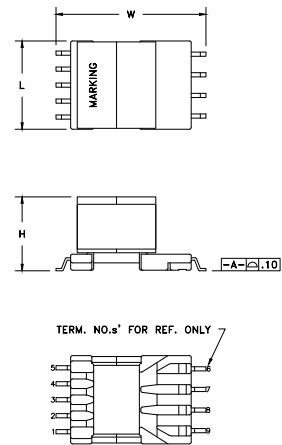
### Estimated Maximum Power Level:



- Half-Bridge / Forward
- DC-DC Flyback
- ..... Push-Pull
- .-.- Offline Flyback

All curves are DC-DC unless otherwise noted. For offline applications, the power level must be derated as shown in the flyback curves.

### Dimensions:



### Footprint (mm):

