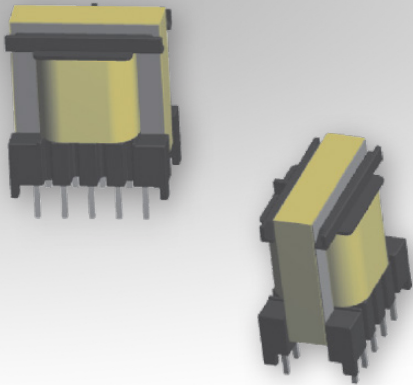


Bobbin Packages

EE20/10/6 (EF20)

10-Terminal EXT, THT, Vertical



Characteristics:

This TH EE20/10/6 (EF20) package was developed for special safety cases and low cost, compact footprint requirements.

Applications:

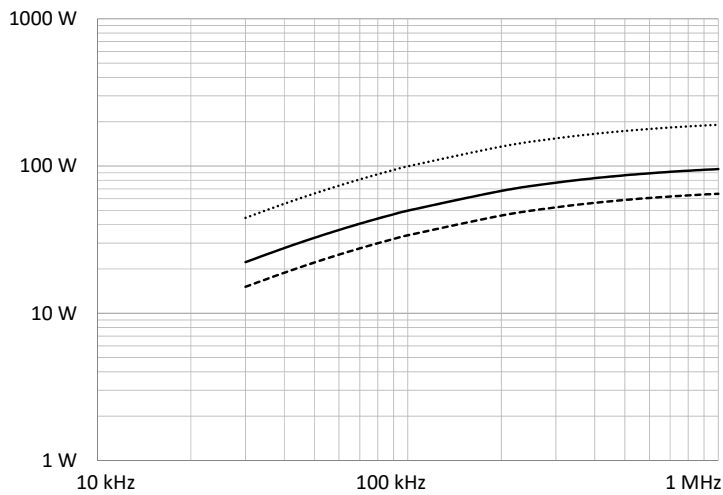
- Offline
- Industrial controls
- Lighting
- Metering
- White goods
- Telecom
- Charging
- Stand-by power

Technical Data:

Order Code	Type of Insulation	Winding Width (mm)	Winding Build (mm)	Winding Perimeter (mm)	A_c (mm ²)	L_e (mm)	V_e (mm ³)	Core Order Code (Power)
070-6372	Reinforced	12.5	3.15	30.23	32	46	1472	150-1945

Order Code	L (mm)	W (mm)	H (mm)	G (mm)
070-6372	22.7 max.	14.6 max.	25.3 max.	3.5 ±0.5

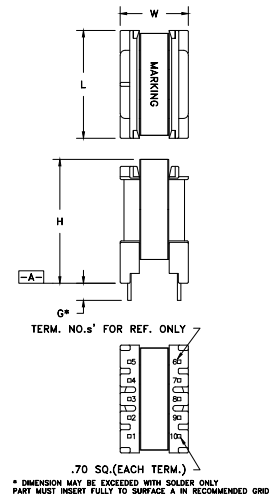
Estimated Maximum Power Level:



..... Push-Pull — DC-DC Flyback --- Offline Flyback

All curves are DC-DC unless otherwise noted. For offline applications, the power level must be derated as shown in the flyback curves.

Dimensions:



Footprint (mm):

