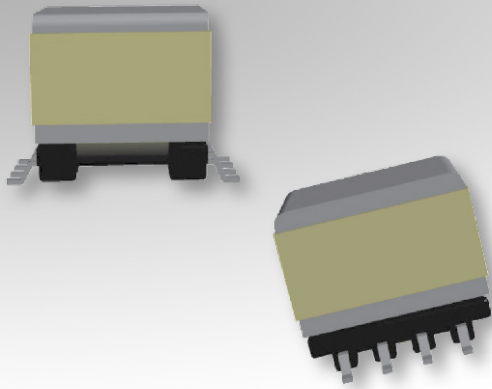


# Bobbin Packages

## EP10

8-Terminal, SMT, Horizontal



### Characteristics:

This SMT EP10 package was developed for functional insulation cases and low cost, compact footprint requirements. It features self-shielding cores for EMI improvement.

### Applications:

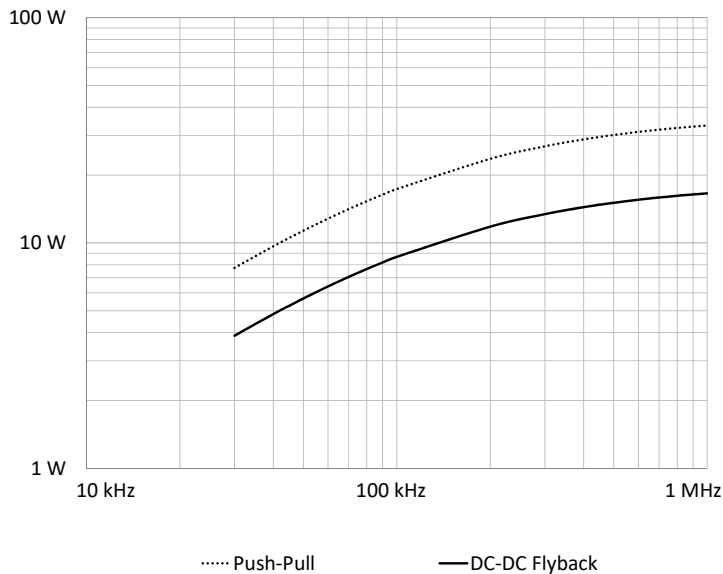
- DC/DC converter
- Industrial controls
- Lighting
- Metering
- White goods
- PoE
- Telecom
- DSL
- CMC

### Technical Data:

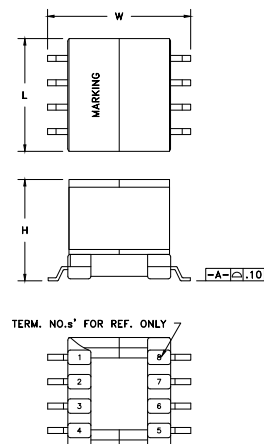
Order Code	Type of Insulation	Winding Width (mm)	Winding Build (mm)	Winding Perimeter (mm)	$A_e$ (mm <sup>2</sup> )	$L_e$ (mm)	$V_e$ (mm <sup>3</sup> )	Core Order Code (Power)	Core Order Code (Digital)
070-6052	Functional	5.79	2.1	15.08	11.3	19.3	218	150-2361	150-0339

Order Code	L (mm)	W (mm)	H (mm)
070-6052	13.34 max.	15.24 max.	11.43 max.

### Estimated Maximum Power Level:



### Dimensions:



### Footprint (mm):

