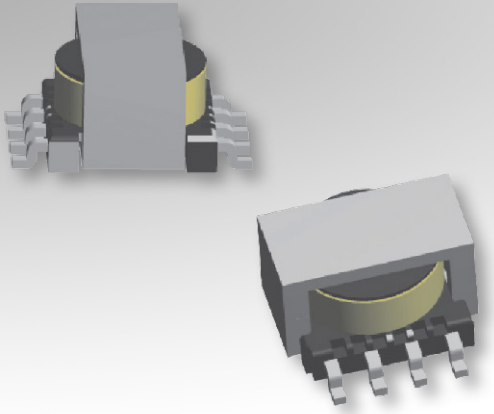


# Bobbin Packages

## ER9.5

8-Terminal, SMT, Vertical



### Characteristics:

This SMT ER9.5 package was developed for functional insulation cases and low profile requirements.

### Applications:

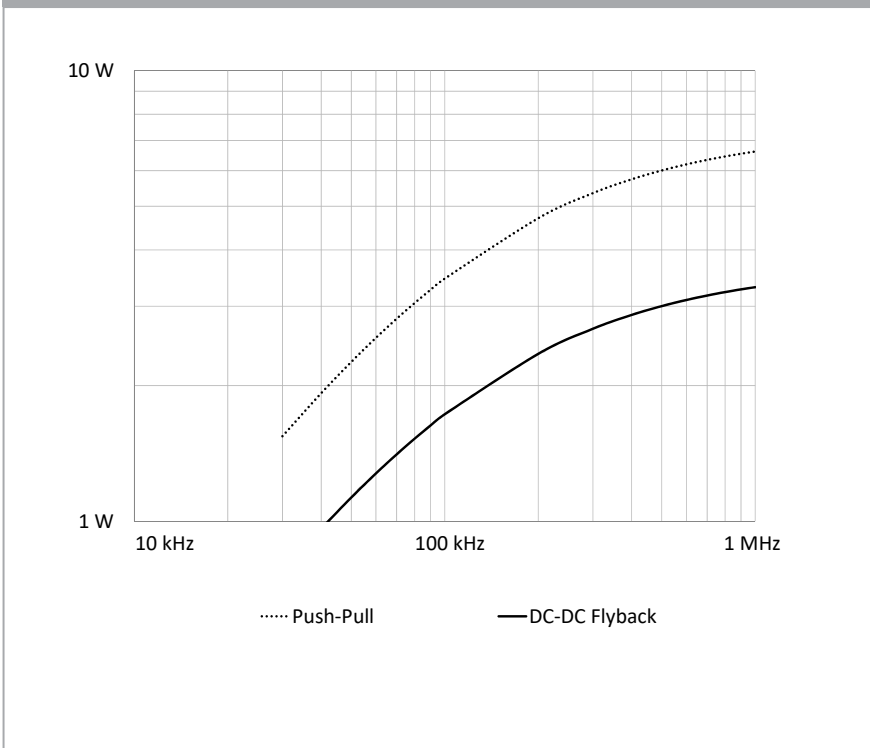
- DC/DC converter
- Industrial controls
- Lighting
- Metering
- White goods
- Telecom

### Technical Data:

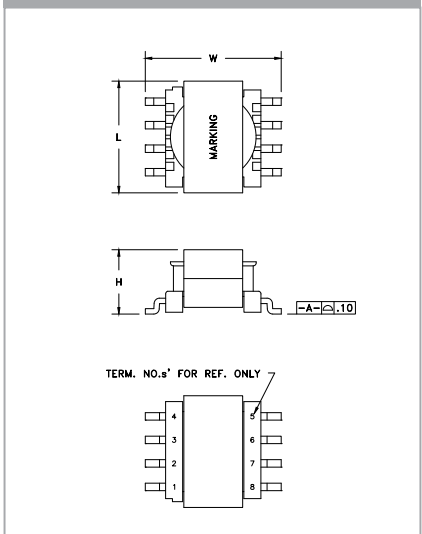
Order Code	Type of Insulation	Winding Width (mm)	Winding Build (mm)	Winding Perimeter (mm)	$A_c$ (mm <sup>2</sup> )	$L_e$ (mm)	$V_e$ (mm <sup>3</sup> )	Core Order Code (Power)
070-6051	Functional	2.16	1.42	13.97	8	14.2	114	150-1188

Order Code	L (mm)	W (mm)	H (mm)
070-6051	10 max.	12.21 max.	5.97 max.

### Estimated Maximum Power Level:



### Dimensions:



### Footprint (mm):

