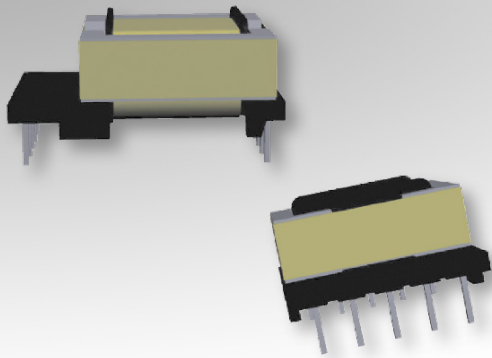


Bobbin Packages

EFD20

10-Terminal EXT, THT, Horizontal



Characteristics:

This TH EFD20 package was developed for special safety cases and low profile requirements.

Applications:

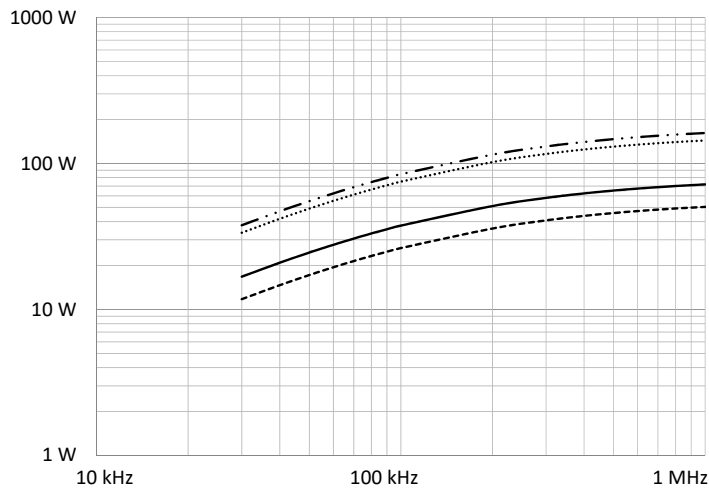
- Offline
- Industrial controls
- Lighting
- Metering
- White goods
- Telecom
- Charging
- Stand-by power

Technical Data:

Order Code	Type of Insulation	Winding Width (mm)	Winding Build (mm)	Winding Perimeter (mm)	A_c (mm ²)	L_e (mm)	V_o (mm ³)	Core Order Code (Power)
070-5982	Reinforced	13.4	2.25	31.01	31	47	1457	150-2124

Order Code	L (mm)	W (mm)	H (mm)	G (mm)
070-5982	21.5 max.	29 max.	12 max.	3.6 ±0.2

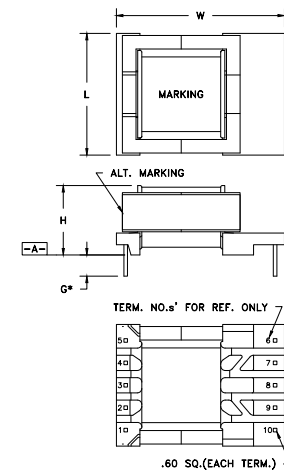
Estimated Maximum Power Level:



- Half-Bridge / Forward
- DC-DC Flyback
- Push-Pull
- .-.- Offline Flyback

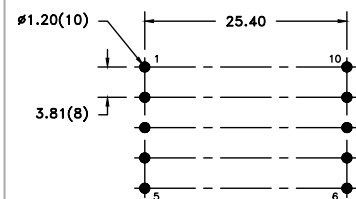
All curves are DC-DC unless otherwise noted. For offline applications, the power level must be derated as shown in the flyback curves.

Dimensions:



* DIMENSION MAY BE EXCEEDED WITH SOLDER ONLY PART MUST INSERT FULLY TO SURFACE A IN RECOMMENDED GRID

Footprint (mm):



RECOMMENDED P.C. PATTERN, COMPONENT SIDE TOLERANCE: ±.03