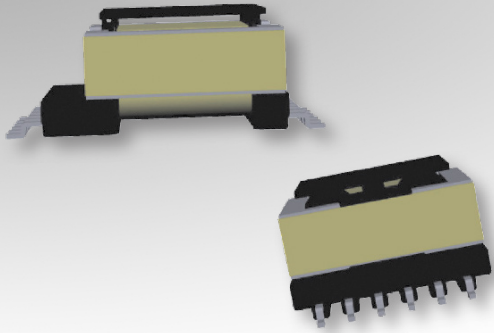


Bobbin Packages

EFD20

12-Terminal EXT, SMT, Horizontal



Characteristics:

This SMT EFD20 package was developed for special safety cases and low profile requirements. It features many terminals for multiple outputs, split coils, or parallel high current winds.

A max height of 12mm is achievable without the pick-and-place cap.

Applications:

- Offline
- Industrial controls
- Lighting
- Metering
- White goods
- Telecom
- Charging
- Stand-by power

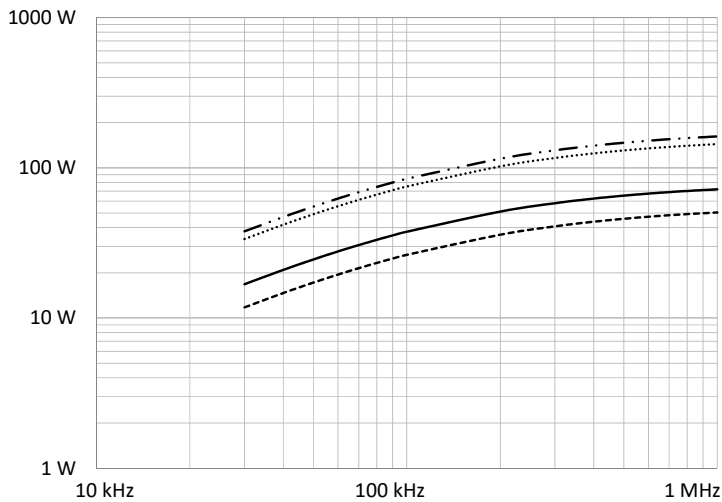
1

Technical Data:

Order Code	Type of Insulation	Winding Width (mm)	Winding Build (mm)	Winding Perimeter (mm)	A_c (mm ²)	L_e (mm)	V_e (mm ³)	Core Order Code (Power)
070-5900	Reinforced	13.4	2.25	30.64	31	47	1457	150-2124

Order Code	L (mm)	W (mm)	H (mm)
070-5900	21.5 max.	33.8 max.	13 max.

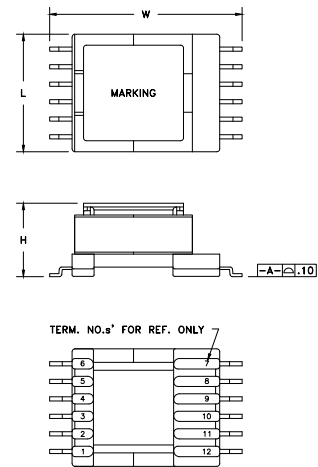
Estimated Maximum Power Level:



- Half-Bridge / Forward
- DC-DC Flyback
- Push-Pull
- .-.- Offline Flyback

All curves are DC-DC unless otherwise noted. For offline applications, the power level must be derated as shown in the flyback curves.

Dimensions:



Footprint (mm):

