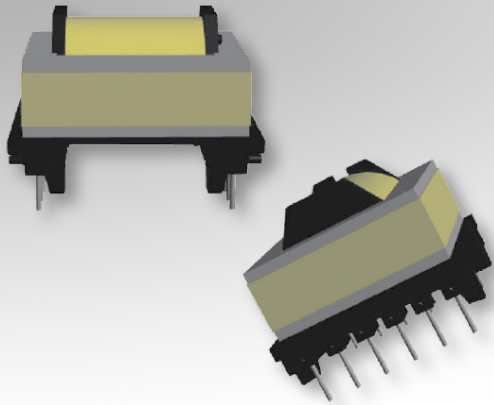


Bobbin Packages

ER28/17

12-Terminal, THT, Horizontal



Characteristics:

This TH ER28/17 package was developed for functional or special safety cases and low cost requirements. It features many terminals for multiple outputs, split coils, or parallel high current winds.

Applications:

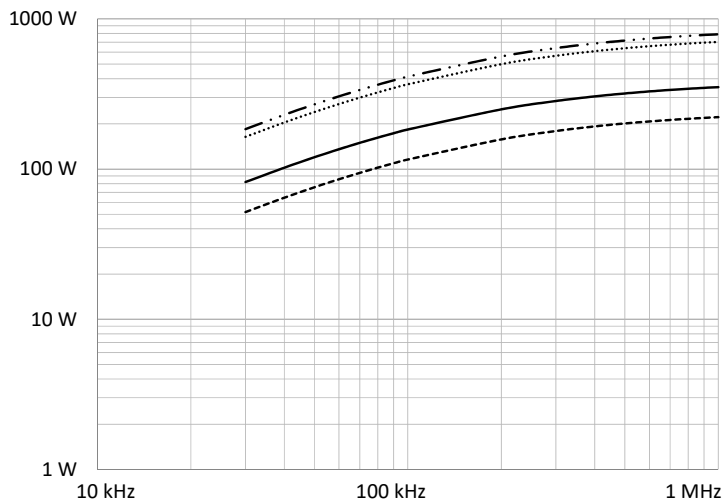
- Offline
- DC/DC converter
- Industrial controls
- Lighting
- White goods
- Telecom
- Charging
- Stand-by power
- PFC

Technical Data:

Order Code	Type of Insulation	Winding Width (mm)	Winding Build (mm)	Winding Perimeter (mm)	A_c (mm ²)	L_e (mm)	V_e (mm ³)	Core Order Code (Power)
070-5652	Functional/Reinforced	21.69	4.39	37.64	81.4	75.5	6146	150-2504

Order Code	L (mm)	W (mm)	H (mm)	G (mm)
070-5652	32 max.	39 max.	26 max.	3.5 ±0.5

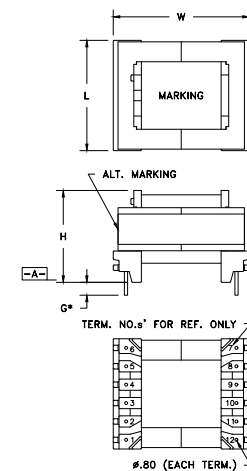
Estimated Maximum Power Level:



- Half-Bridge / Forward
- DC-DC Flyback
- Push-Pull
- .-.- Offline Flyback

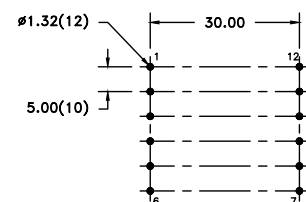
All curves are DC-DC unless otherwise noted. For offline applications, the power level must be derated as shown in the flyback curves.

Dimensions:



* DIMENSION MAY BE EXCEEDED WITH SOLDER ONLY
PART MUST INSERT FULLY TO SURFACE A IN RECOMMENDED GRID

Footprint (mm):



RECOMMENDED P.C. PATTERN, COMPONENT SIDE
TOLERANCE: ±.03