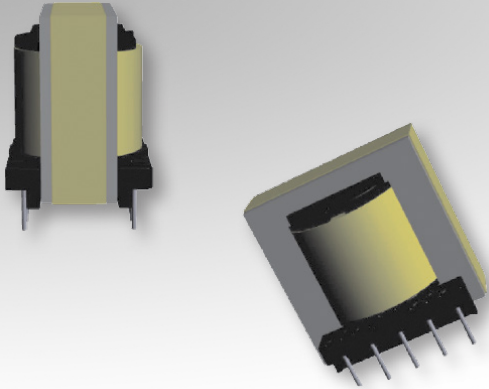


Bobbin Packages

ER28/14

10-Terminal, THT, Vertical



Characteristics:

This TH ER28/14 package was developed for functional or special safety cases and low cost, compact footprint requirements.

Applications:

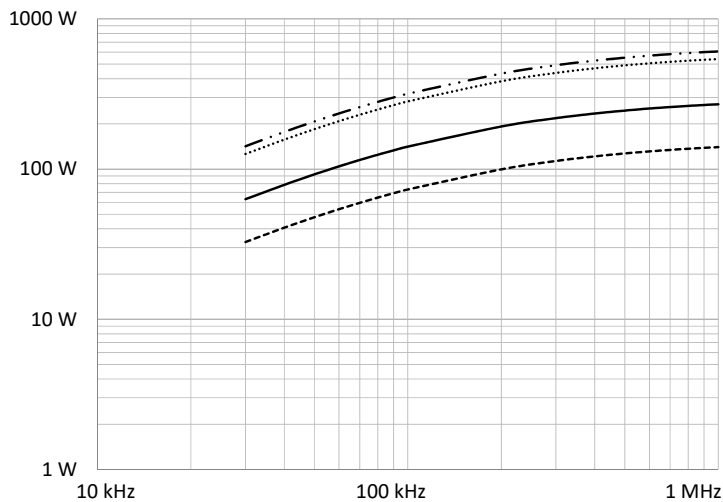
- Offline
- DC/DC converter
- Industrial controls
- Lighting
- White goods
- Telecom
- Charging
- Stand-by power
- PFC

Technical Data:

Order Code	Type of Insulation	Winding Width (mm)	Winding Build (mm)	Winding Perimeter (mm)	A_c (mm ²)	L_e (mm)	V_e (mm ³)	Core Order Code (Power)
070-5576	Functional/Reinforced	16.61	4.39	38.33	82.1	64	5254	150-2670

Order Code	L (mm)	W (mm)	H (mm)	G (mm)
070-5576	29.84 max.	24 max.	33 max.	2.54 min.

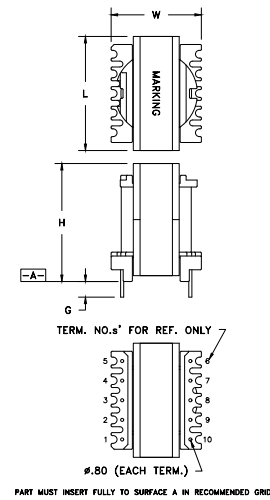
Estimated Maximum Power Level:



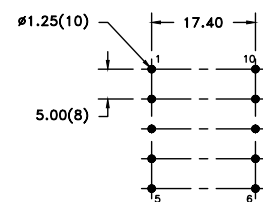
- Half-Bridge / Forward
- DC-DC Flyback
- Push-Pull
- .-.- Offline Flyback

All curves are DC-DC unless otherwise noted. For offline applications, the power level must be derated as shown in the flyback curves.

Dimensions:



Footprint (mm):



RECOMMENDED P.C. PATTERN, COMPONENT SIDE
TOLERANCE: ±.03