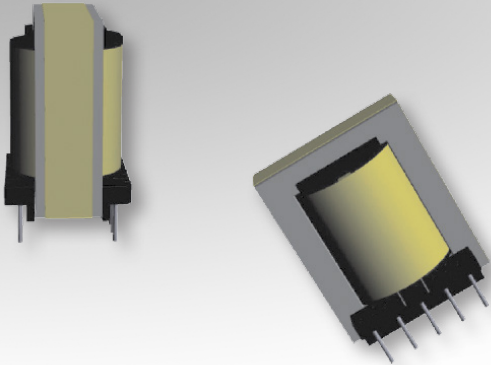


# Bobbin Packages

## ER28/17

10-Terminal, THT, Vertical



### Characteristics:

This TH ER28/17 package was developed for functional or special safety cases and low cost, compact footprint requirements.

### Applications:

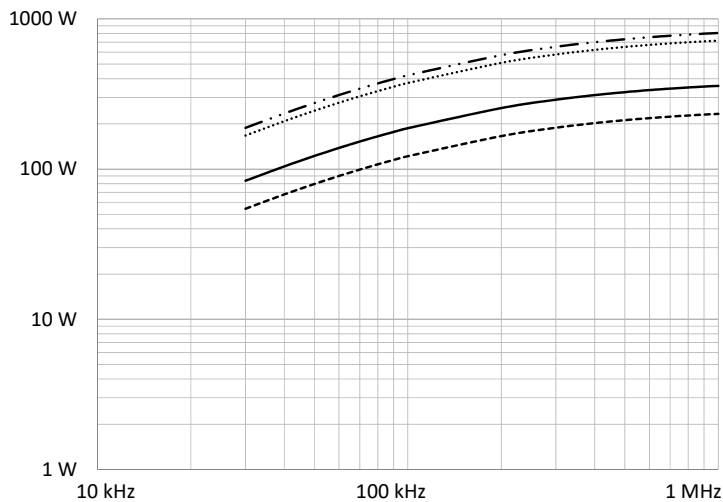
- Offline
- DC/DC converter
- Industrial controls
- Lighting
- White goods
- Telecom
- Charging
- Stand-by power
- PFC

### Technical Data:

Order Code	Type of Insulation	Winding Width (mm)	Winding Build (mm)	Winding Perimeter (mm)	$A_c$ (mm <sup>2</sup> )	$L_e$ (mm)	$V_e$ (mm <sup>3</sup> )	Core Order Code (Power)
070-5565	Functional/Reinforced	22.91	4.24	38.63	81.4	75.5	6146	150-2504

Order Code	L (mm)	W (mm)	H (mm)	G (mm)
070-5565	29.85 max.	24 max.	36 max.	4.5 ±0.64

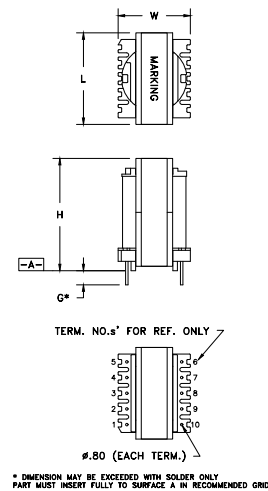
### Estimated Maximum Power Level:



- Half-Bridge / Forward
- DC-DC Flyback
- ..... Push-Pull
- Offline Flyback

All curves are DC-DC unless otherwise noted. For offline applications, the power level must be derated as shown in the flyback curves.

### Dimensions:



### Footprint (mm):

