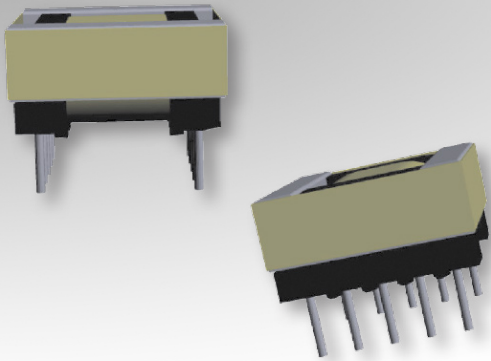


Bobbin Packages

EPC13

10-Terminal, THT, Horizontal



Characteristics:

This TH EPC13 package was developed for functional insulation cases and low profile, compact footprint requirements.

Applications:

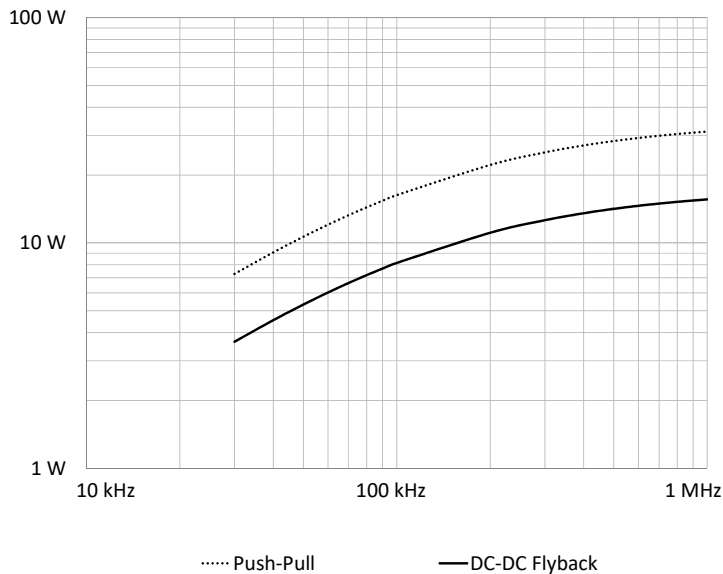
- DC/DC converter
- Industrial controls
- Lighting
- Metering
- White goods
- PoE
- Telecom

Technical Data:

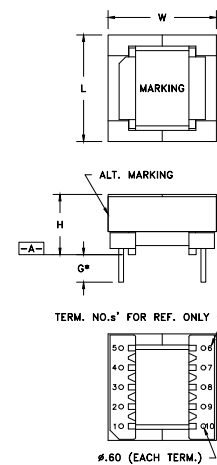
| Order Code | Type of Insulation | Winding Width (mm) | Winding Build (mm) | Winding Perimeter (mm) | A_c (mm ²) | L_e (mm) | V_e (mm ³) | Core Order Code (Power) |
|------------|--------------------|--------------------|--------------------|------------------------|--------------------------|------------|--------------------------|-------------------------|
| 070-5483 | Functional | 6.81 | 1.55 | 21 | 12.8 | 28.8 | 368 | 150-2883 |

| Order Code | L (mm) | W (mm) | H (mm) | G (mm) |
|------------|-----------|------------|----------|------------|
| 070-5483 | 14.6 max. | 14.73 max. | 8.5 max. | 3.18 ±0.64 |

Estimated Maximum Power Level:

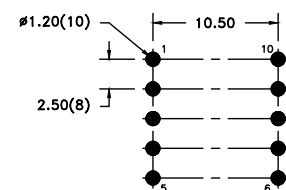


Dimensions:



* DIMENSION MAY BE EXCEEDED WITH SOLDER ONLY PART MUST INSERT FULLY TO SURFACE A IN RECOMMENDED GRID

Footprint (mm):



RECOMMENDED P.C. PATTERN, COMPONENT SIDE
TOLERANCE: ±.03