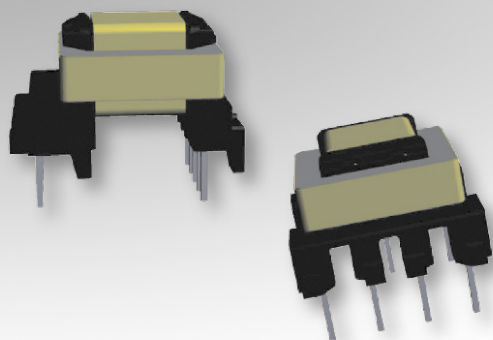


# Bobbin Packages

## EE16/8/5 (EF16)

9-Terminal EXT, THT, Horizontal



### Characteristics:

This TH EE16/8/5 (EF16) package was developed for special safety cases and low cost requirements.

### Applications:

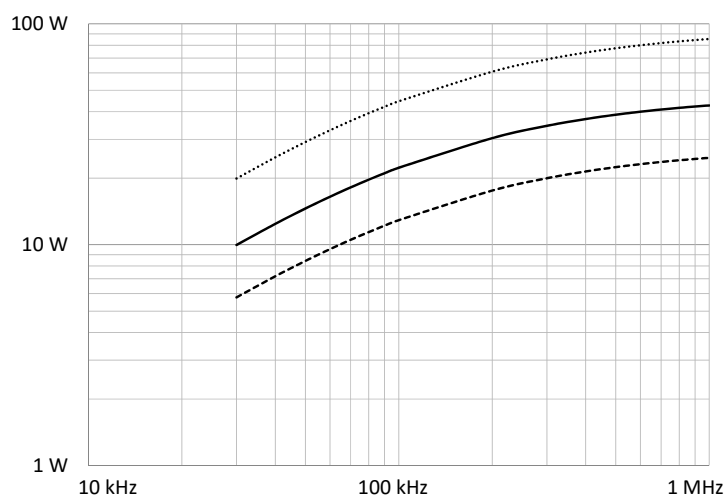
- Offline
- Industrial controls
- Lighting
- Metering
- White goods
- Telecom
- Charging
- Stand-by power

### Technical Data:

Order Code	Type of Insulation	Winding Width (mm)	Winding Build (mm)	Winding Perimeter (mm)	A <sub>e</sub> (mm <sup>2</sup> )	L <sub>e</sub> (mm)	V <sub>e</sub> (mm <sup>3</sup> )	Core Order Code (Power)
070-5280	Reinforced	9.5	2.34	25.4	20.1	37.6	756	150-2182

Order Code	L (mm)	W (mm)	H (mm)	G (mm)
070-5280	20.32 max.	24.38 max.	16 max.	3.5 ±0.5

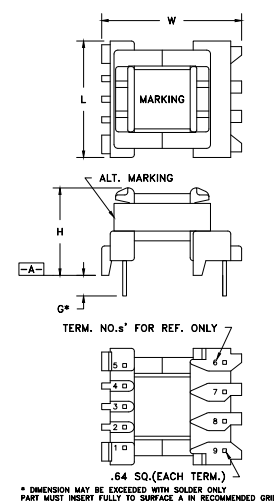
### Estimated Maximum Power Level:



..... Push-Pull    — DC-DC Flyback    --- Offline Flyback

All curves are DC-DC unless otherwise noted. For offline applications, the power level must be derated as shown in the flyback curves.

### Dimensions:



### Footprint (mm):

