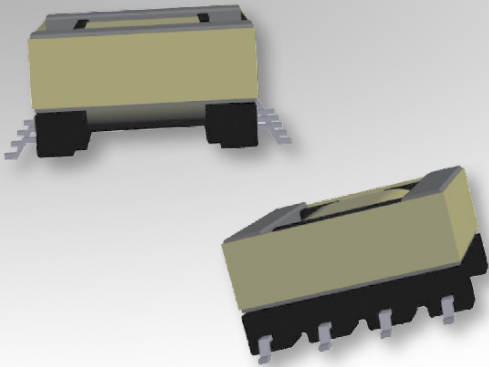


# Bobbin Packages

## EPC17

9-Terminal, SMT, Horizontal



### Characteristics:

This SMT EPC17 package was developed for functional insulation cases and low profile, compact footprint requirements.

### Applications:

- DC/DC converter
- Industrial controls
- Lighting
- Metering
- White goods
- PoE
- Telecom

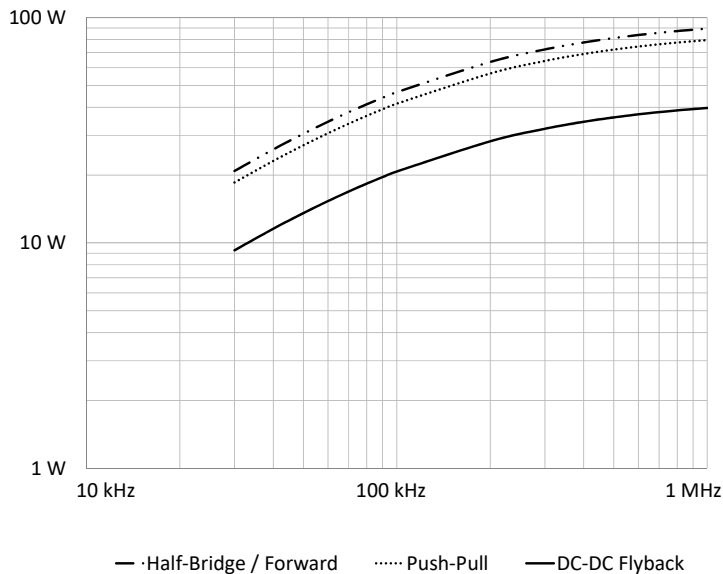
1

### Technical Data:

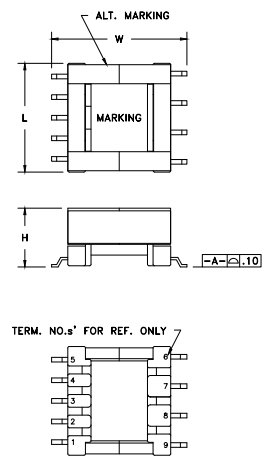
Order Code	Type of Insulation	Winding Width (mm)	Winding Build (mm)	Winding Perimeter (mm)	$A_c$ (mm <sup>2</sup> )	$L_e$ (mm)	$V_e$ (mm <sup>3</sup> )	Core Order Code (Power)
070-4890	Functional	9.6	2.05	25.7	22.1	38.9	858	150-2884

Order Code	L (mm)	W (mm)	H (mm)
070-4890	19.2 max.	23.75 max.	10.16 max.

### Estimated Maximum Power Level:



### Dimensions:



### Footprint (mm):

