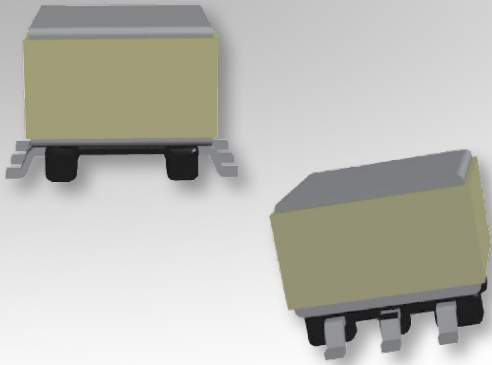


Bobbin Packages

EP5

6-Terminal, SMT, Horizontal



Characteristics:

This SMT EP5 package was developed for functional insulation cases and compact footprint requirements. It features self-shielding cores for EMI improvement.

Applications:

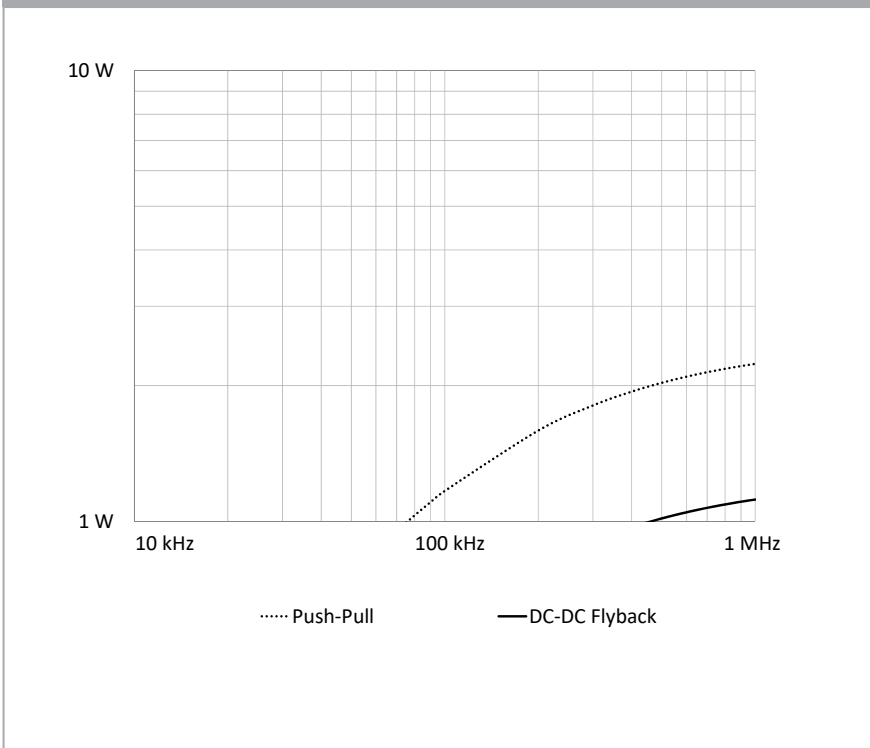
- DC/DC converter
- Industrial controls
- Lighting
- Metering
- White goods
- Telecom
- DSL
- CMC

Technical Data:

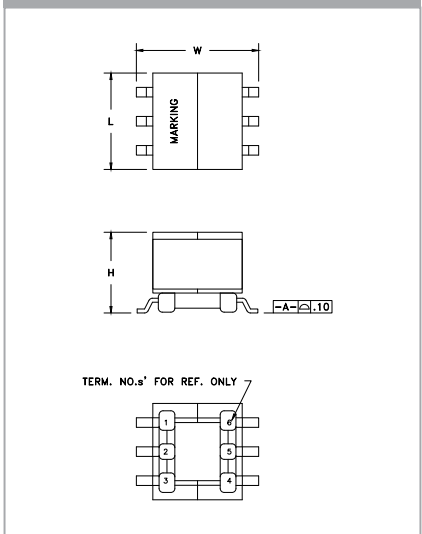
Order Code	Type of Insulation	Winding Width (mm)	Winding Build (mm)	Winding Perimeter (mm)	A_e (mm ²)	L_e (mm)	V_e (mm ³)	Core Order Code (Power)	Core Order Code (Digital)
070-4426	Functional	2.9	0.76	7.85	3.1	9.7	30	150-1219	150-1306

Order Code	L (mm)	W (mm)	H (mm)
070-4426	6.6 max.	8.26 max.	5.59 max.

Estimated Maximum Power Level:



Dimensions:



Footprint (mm):

