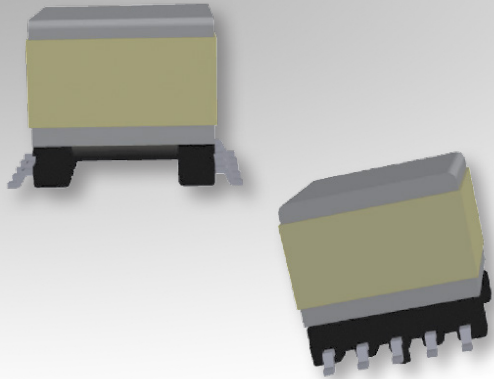


Bobbin Packages

EP13

10-Terminal, SMT, Horizontal



Characteristics:

This SMT EP13 package was developed for special safety cases and low cost, compact footprint requirements. It features self-shielding cores for EMI improvement.

Applications:

- DC/DC converter
- Industrial controls
- Lighting
- Metering
- White goods
- PoE
- Telecom
- DSL
- CMC

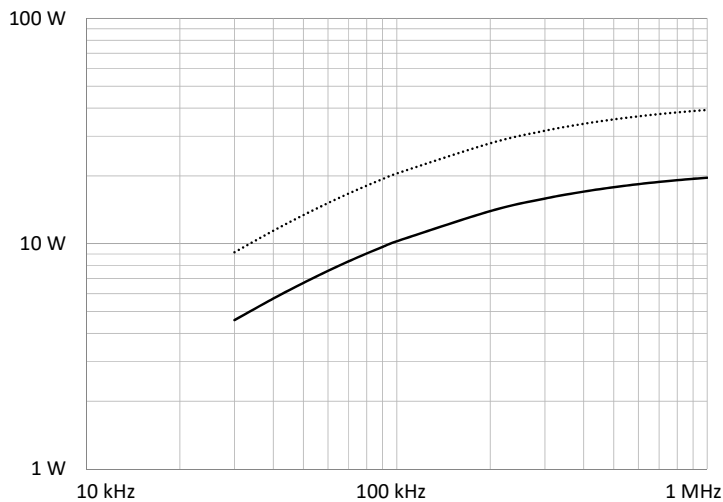
1

Technical Data:

| Order Code | Type of Insulation | Winding Width (mm) | Winding Build (mm) | Winding Perimeter (mm) | A_e (mm ²) | L_e (mm) | V_e (mm ³) | Core Order Code (Power) | Core Order Code (Digital) |
|------------|---------------------|--------------------|--------------------|------------------------|--------------------------|------------|--------------------------|-------------------------|---------------------------|
| 070-4378 | Basic/Supplementary | 7.77/4.47 | 1.91 | 18.03 | 19.5 | 24.2 | 472 | 150-2363 | 150-0899 |

| Order Code | L (mm) | W (mm) | H (mm) |
|------------|------------|------------|-----------|
| 070-4378 | 13.46 max. | 17.75 max. | 12.7 max. |

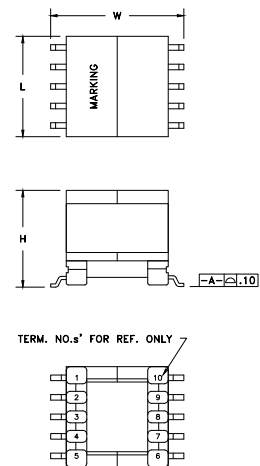
Estimated Maximum Power Level:



..... Push-Pull — DC-DC Flyback

Curves shown are for Supplementary Insulation designs

Dimensions:



Footprint (mm):

