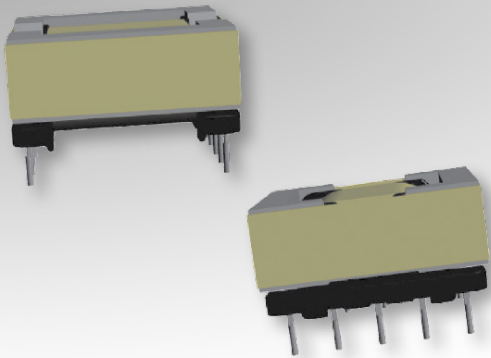


# Bobbin Packages

## EFD25

10-Terminal, THT, Horizontal



### Characteristics:

This TH EFD25 package was developed for functional insulation cases and low profile requirements.

### Applications:

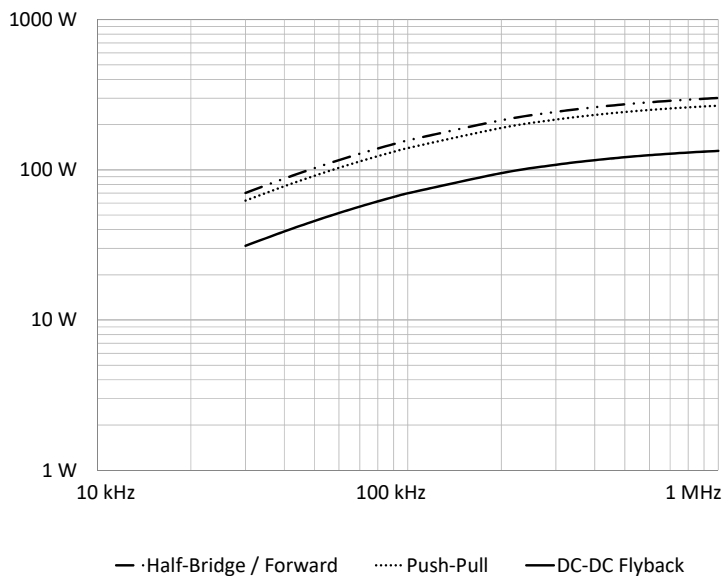
- DC/DC converter
- Industrial controls
- Lighting
- Metering
- White goods
- PoE
- Telecom

### Technical Data:

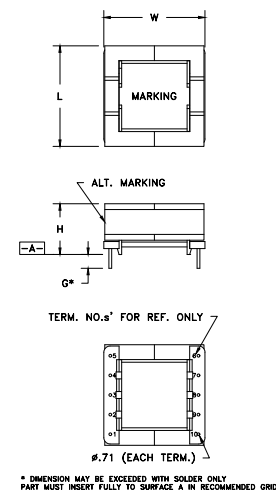
Order Code	Type of Insulation	Winding Width (mm)	Winding Build (mm)	Winding Perimeter (mm)	$A_c$ (mm <sup>2</sup> )	$L_e$ (mm)	$V_e$ (mm <sup>3</sup> )	Core Order Code (Power)
070-2710	Functional	16.69	2.24	37.26	58	57	3306	150-2305

Order Code	L (mm)	W (mm)	H (mm)	G (mm)
070-2710	26.04 max.	26.67 max.	13.59 max.	4.25 ±1

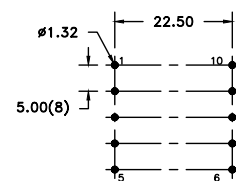
### Estimated Maximum Power Level:



### Dimensions:



### Footprint (mm):



RECOMMENDED P.C. PATTERN, COMPONENT SIDE  
TOLERANCE: ±.03