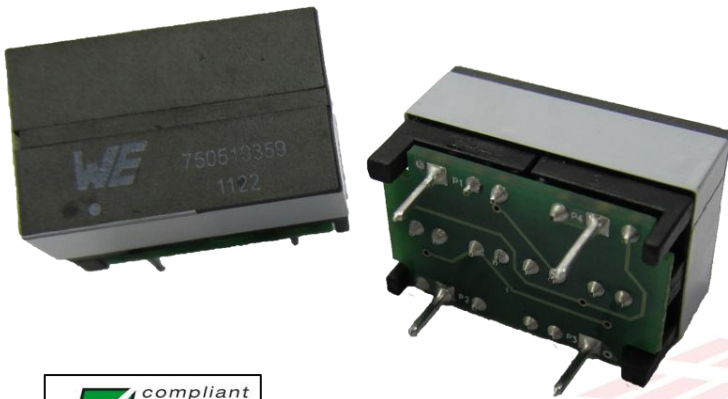


# Splitter

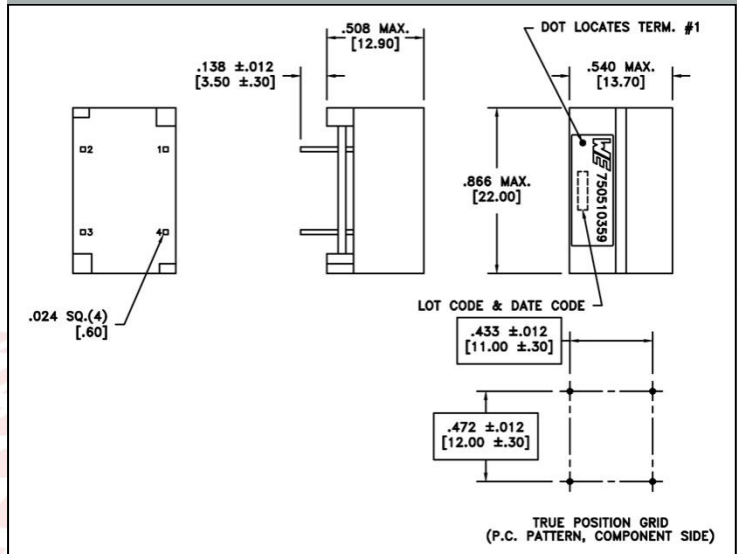
Midcom



## Central Office Splitter for xDSL Applications



### Mechanical



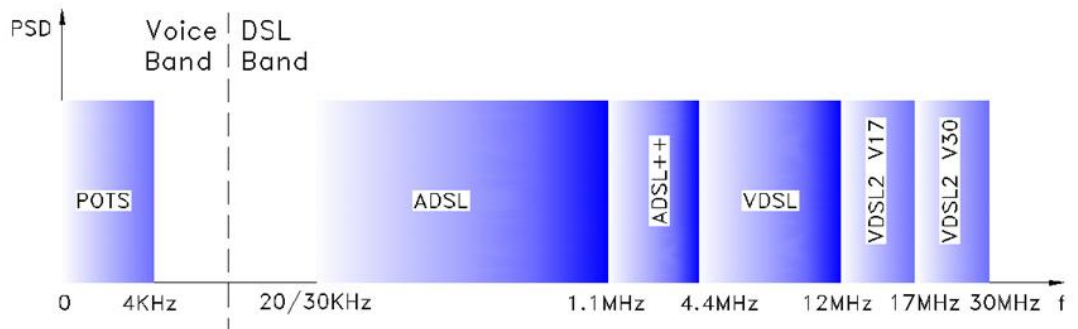
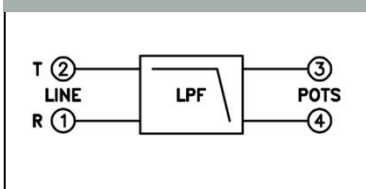
### Characteristics

- Ultra compact structure design
- Integrated splitter inductors, capacitors and resistors
- Next generation miniaturization
- Overall customer BOM and board space reduction
- Cost reduction compared to discrete filters
- Spec Sheet: 750510359 - Designed for ANSI T1.413 short loop

### Applications\*

- ETSI TS 101 952-1-1 Option A w/ 12 & 16K
  - ETSI TS 101 952-1-1 600Ω
  - ETSI TS 101 952-1-1 Option B & BT
  - ETSI TS 101 952-1-1 Option A w/o 12 & 16K
  - MII YD/T1187-2006
  - ETSI TS 101 952-1-3 135 & 150
  - ETSI TS 101 952-1-4 150 & Zr
  - ANSI T1.413 short loop
  - Dual Splitter, YD/T1187 & ETSI 600Ω
  - Dual Splitter, ETSI TS 101 952-1-1 Option A
- \*Contact an engineer at Würth Electronics Midcom for design support.

### Schematic



Extended working frequency range to VDSL2